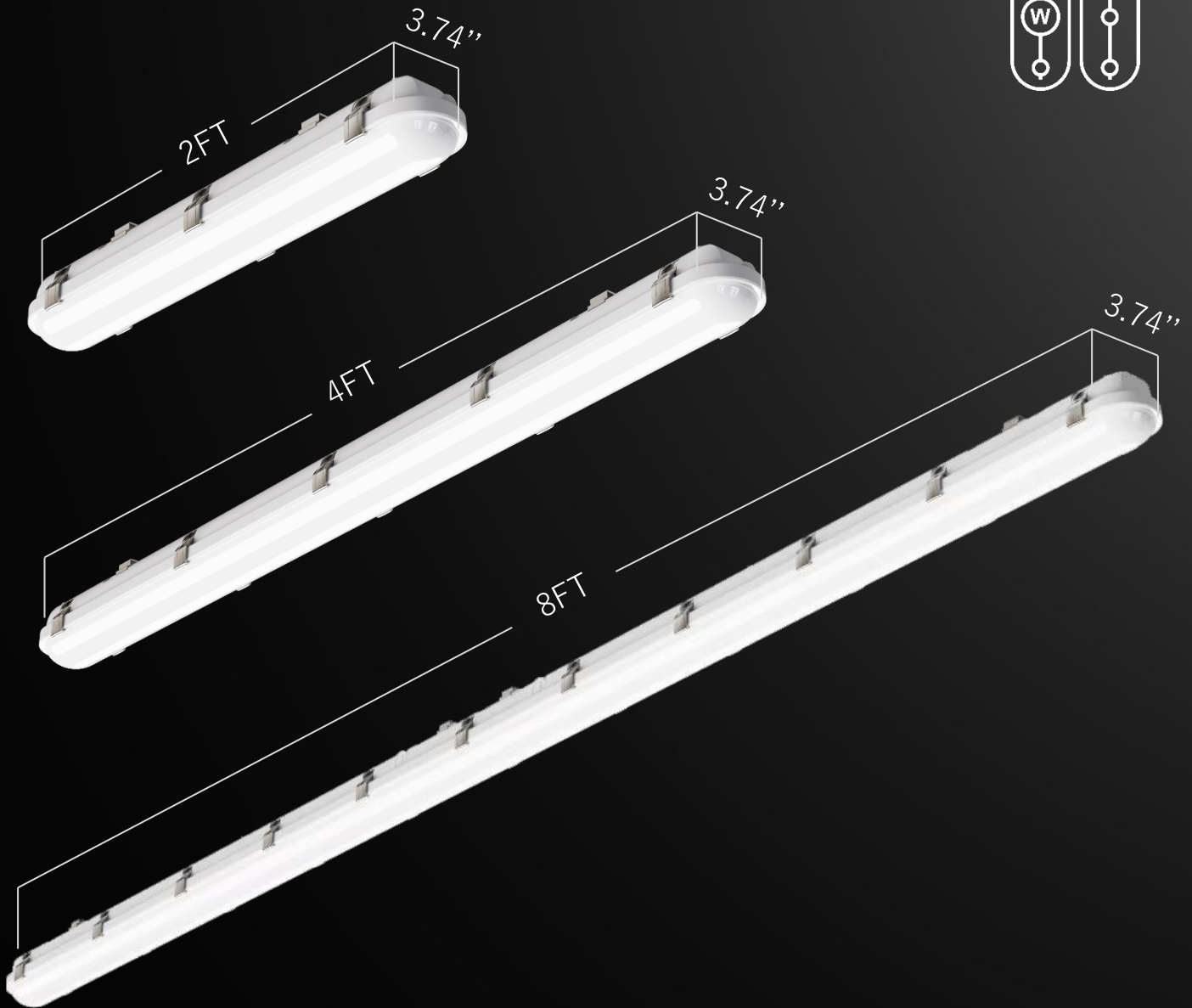
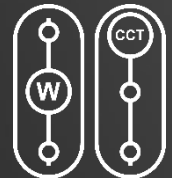


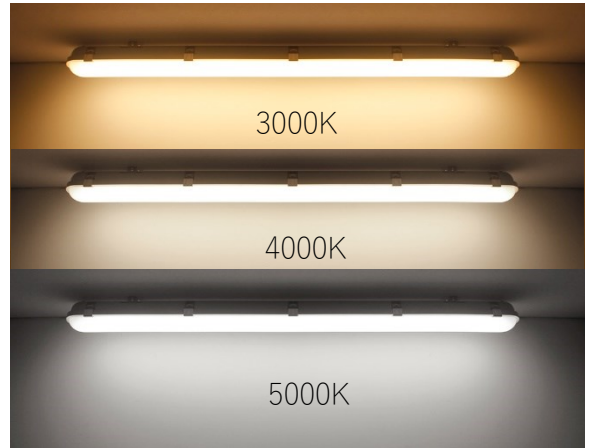
# VPA [3.74" ] width

2FT 4FT 8FT LED Vapor Tight Fixture



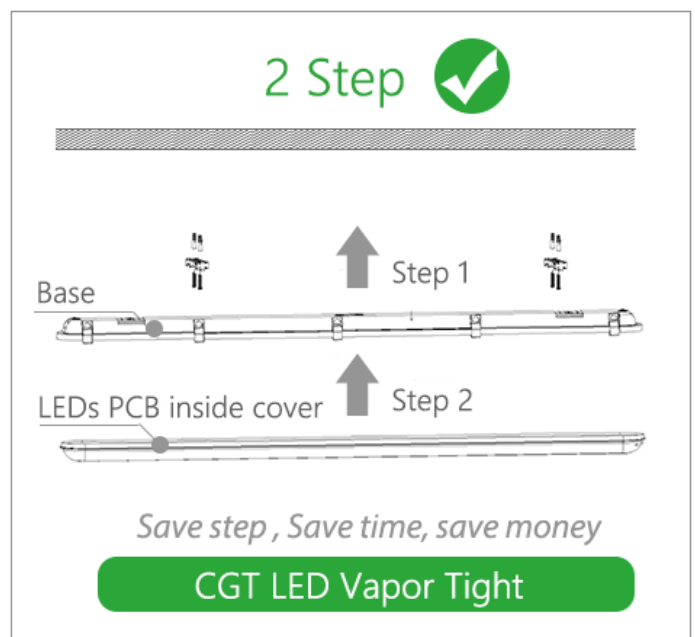
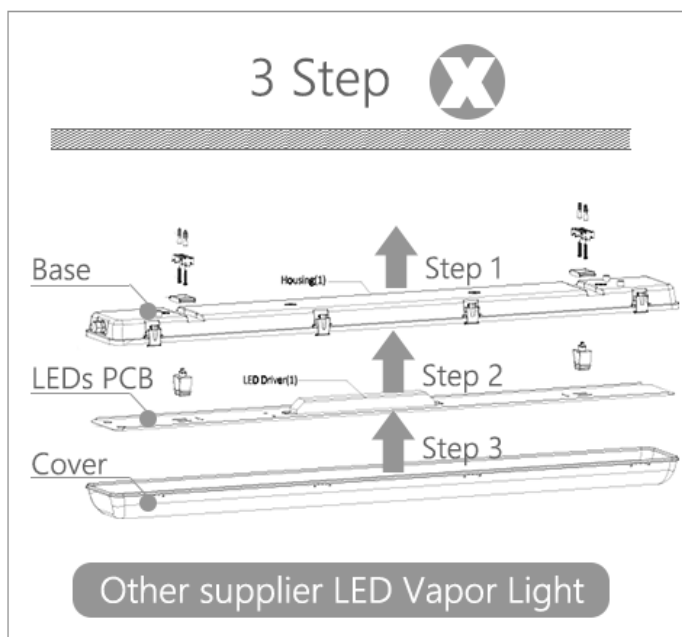
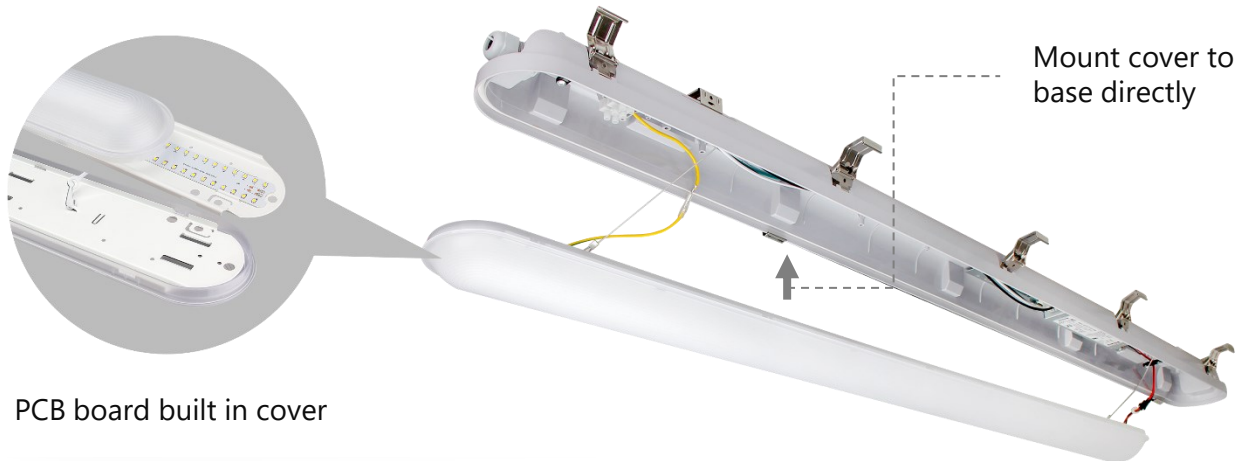
# 3-Power & 3-CCT Selectable

9 SKUs built into one. Reduce your SKUs for making inventory reserve



# Quick Installation Design

The PCB board be built-in cover, mount it to the base directly for save installation steps and time



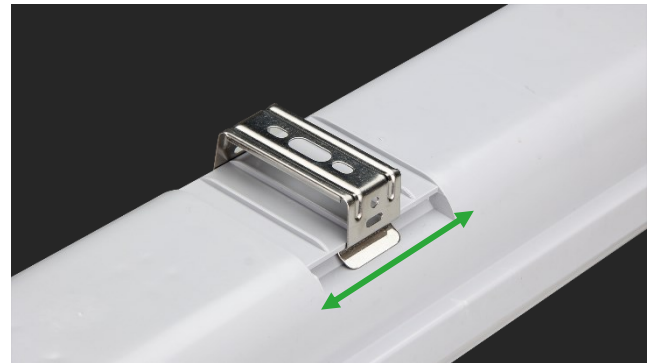
## All-polycarbonate Construction.

5VA fire retardant polycarbonate ensure high standard of safety and maximum impact rate of IK08.



## Mounting Bracket Adjustable

Can adjust the mounting bracket when installation



## Options for additional control.

All models are available with optional PIR or MVS motion sensors, as well as versions of both sensors that are compatible with our Bluetooth wireless lighting control system. The driver is also designed with a DC12V auxiliary port that can easily be wired to other sensors or controls.

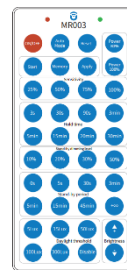
Internal MVS sensor  
(Dip-switch)



External PIR/MVS sensor



PIR Remote control



APP Control



Wall Switch



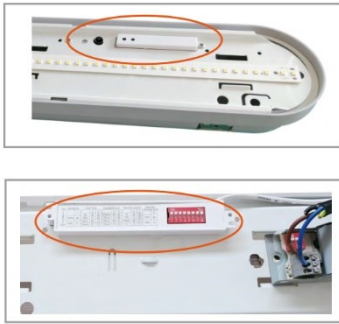
## Mounting options galore

The lamp comes standard with two mounting options: V-Hooks for chain mounting and brackets for surface mounting.



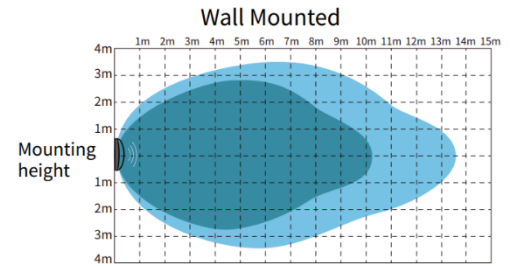
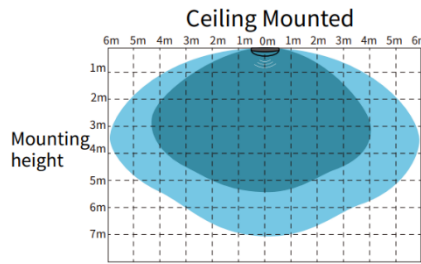
# Microwave Sensor(options)

## Internal



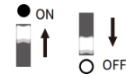
## Detection coverage

Sensitivity : 50% 100%



## Setting with DIP-switch

Model: MS007B-OR



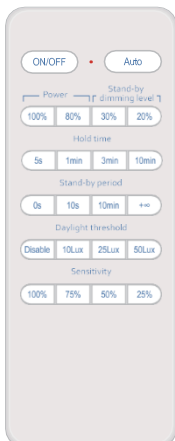
Sensitivity		Hold-Time			Daylight threshold		Stand-by period			Stand-by Dimming		Sensor Mode	
Switch	1	Switch	2	3	Switch	4	Switch	5	6	Switch	8	Switch	8
100%	●	5s	●	●	Disable	●	0s	●	●	20%	●	ON	●
50%	○	90s	○	●	50Lux	○	10s	○	●	30%	○	OFF	○
		5min	●	○			15min	●	○				
		10min	○	○			+∞	○	○				

## Remoter control(options)

Model: MS007R



Remote Model: MR001



Key	Function			
★ When press any button, if the light is flickering one time, means the setting is successful				
ON/OFF	Setting the light permanent ON or OFF without motion mode.			
Auto	Turn on the Sensor mode			
Power	<table border="1"> <tr> <td>100%</td> <td rowspan="2">Light power output when motion detected.</td> </tr> <tr> <td>80%</td> </tr> </table>	100%	Light power output when motion detected.	80%
100%	Light power output when motion detected.			
80%				
Stand-by level	<table border="1"> <tr> <td>30%</td> <td rowspan="2">The dimming level in the standby period.</td> </tr> <tr> <td>20%</td> </tr> </table>	30%	The dimming level in the standby period.	20%
30%	The dimming level in the standby period.			
20%				
Hold time	Lamp keep 100% brightness after moving objects leave the detection area. <b>5s / 1min / 3min / 10min</b>			
Stand-by period	The period of light keeping low output before it's completely switched off. <b>0s / 10s / 10Min / +∞</b> "+∞", the lamp always keep at low output doesn't turn off. "0s", the lamp will turn off directly after Holt-time			
Daylight threshold	Definition of the ambient brightness; only when the ambient brightness is lower than the preset specific lux amount, the sensor will work; <b>Disable / 10Lux / 25Lux / 50Lux</b> "disable", the sensor will detects motion regardless the ambient brightness.			
Sensitivity	100% detection area is also known as the strongest sensitivity. <b>50% / 100%</b>			

# Bluetooth Mesh Sensor(options)



External MVS sensor



External PIR sensor

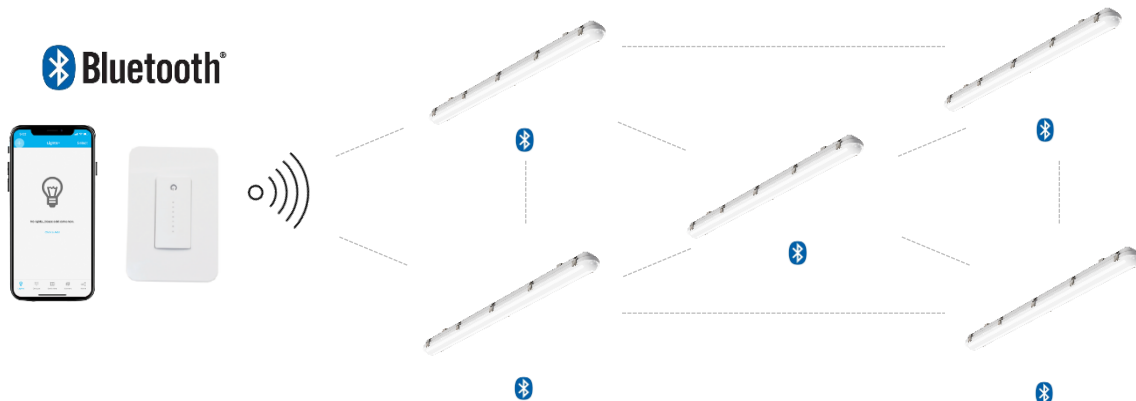


Remote control Wall switch

## APP OPTIONS

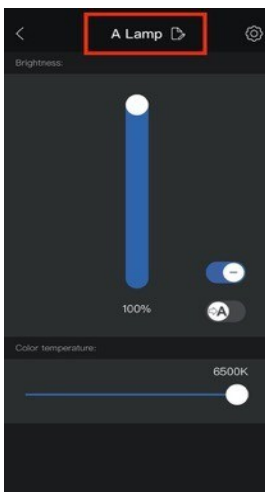
**GEBC**

**SILVAIR**  
USA Brand

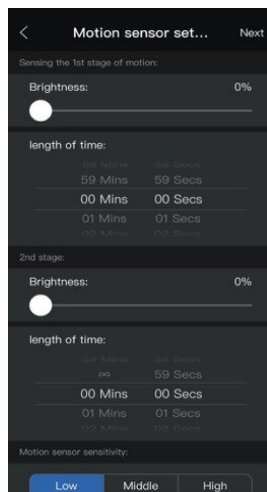


- Ⓜ Wireless Bluetooth SIG Mesh between 30M/100FT Distance of two Fixtures.
- 🏠 Group control, Support 100pcs in one Group.
- 🕒 Schedule and Timer, like 9:00AM ON, 18:00 OFF.
- 📄 Scene Setting, like meeting, working etc.
- 👤 Motion Sensor and Daylight harvest, automatically turn on, turn off and dimming.
- 🔗 Linkage, other lights in the same group detects movement, and the linkage is turned on in this group, then this light will dim to linkage light level.
- 📶 Wireless Control and no need Hub.
- 📱 APP System is Easy to operated.

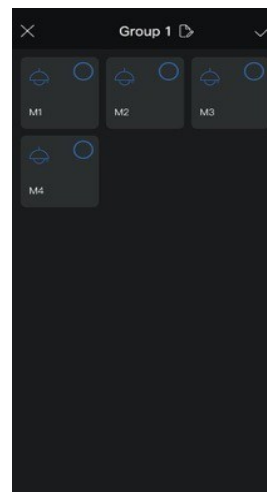
### Dimming



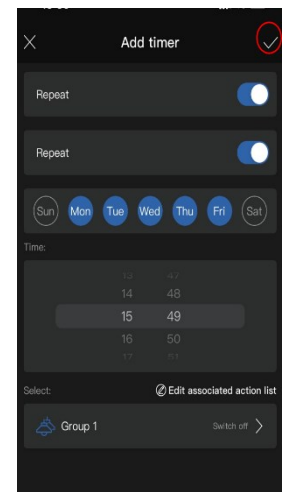
### Sensor Setting



### Grouping



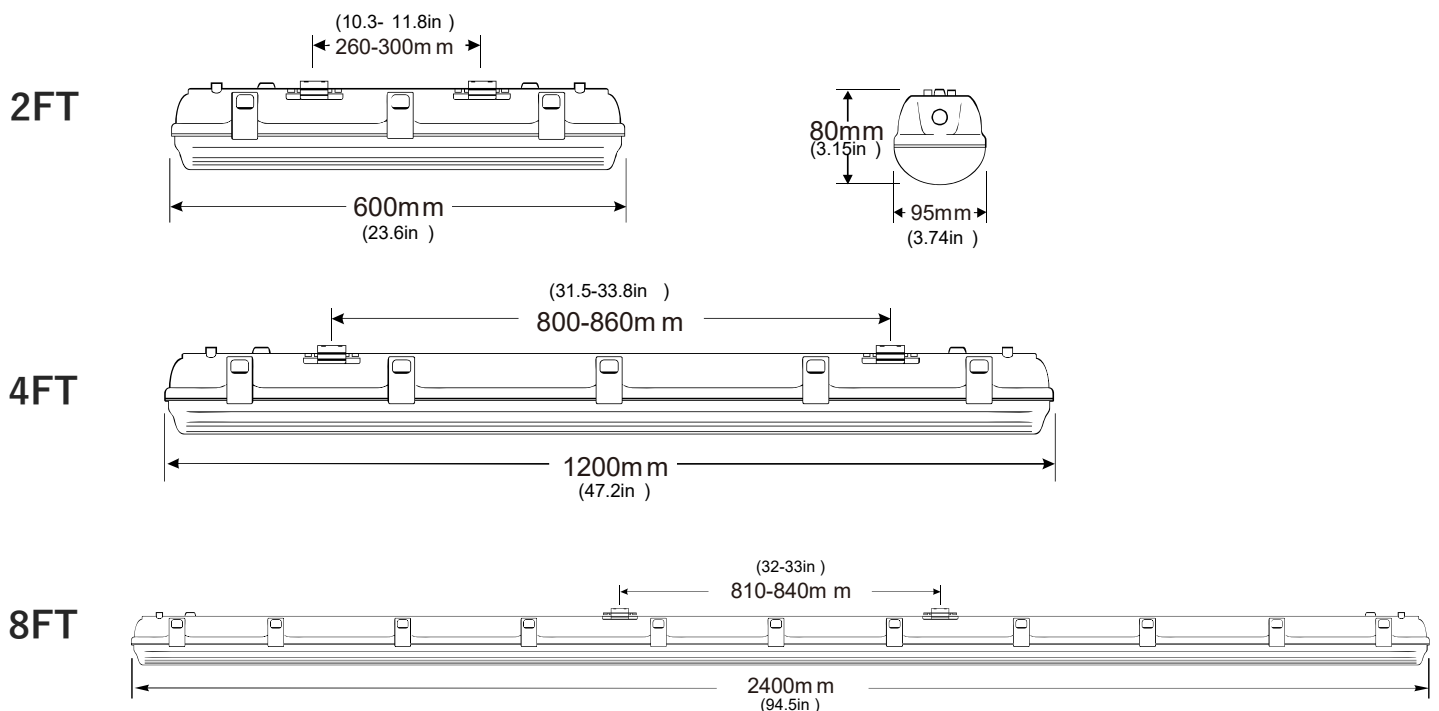
### Timmer



# PARAMETER

Model No.	VP-27A	VP4-40A	VP4-54A	VP-80A	VP-100A
<b>Size</b>	2FT	4FT	4FT	8FT	8FT
<b>Wattage</b>	25W/20W/15W	40W/32W/24W	54W/50W/40W	80W/70W/60W	100W/80W/60W
<b>Lumens</b>	3500lm 4000lm	5600lm 6400lm	7500lm 8600lm	11200lm 12800lm	14000lm 16000lm
<b>Luminous Efficacy</b>	140lm/w with Frosted cover (standard) 160lm/w with Clear cover (MOQ:500)				
<b>LEDs Type</b>	SMD2835				
<b>CCT</b>	3000K, 4000K, 5000K(3-CCT Selectable options)				
<b>CRI</b>	80+				
<b>Angle</b>	120°				
<b>Input Voltage</b>	100-277Vac or 100-347Vac 50-60Hz				
<b>Function</b>	0-10V Dim(Sensor, Emergency, Bluetooth Mesh optional)				
<b>PF</b>	>0.90				
<b>IP Rating</b>	IP66 /Wet Location				
<b>Work Temp.</b>	-40° C ~ 50° C(-40° F ~ 122° F)				
<b>Housing</b>	PC Body + PC Diffuser (V0 Fire Rating)				
<b>Installation</b>	Surface Mount /Suspending				
<b>Lifespan</b>	L80>100,000 Hours				
<b>Warranty</b>	5 Years				
<b>Certification</b>	UL/cUL, ETL/cETL, DLC				

## Dimension



# ORDER INFORMATION

## VP4-54A-50KFD

	XXX	X	X	-XX
<b>Product Family</b>	<b>CCT</b>	<b>Cover</b>	<b>Dimmable</b>	<b>Function</b>
VP-27A = 2FT 25W/20W/15W	30K = 3000K	F = Frosted	D = 0-10V Dim	Blank= No options
VP4-40A = 4FT 40W/32W/24W	40K = 5000K	C = Clear	N = Non-Dim	SR= Sensor
VP4-54A = 4FT 54W/50W/40W	50K = 5000K			EM = Emergency
VP-80A-HV = 8FT 80W/70W/60W	3CK = 3-CCT			RM = Lighting Control +Emergency
VP-100A-HV = 8FT 100W/80W/60W				B = Bluetooth Sensor

In Standard	Accessories (order Separately)
140lm/w Frosted Cover	Wire rope suspending kit
100-277Vac 50/60Hz	Conduit Fitting #470 trade ½"size
0-10V Dim	Conduit Fitting #470 trade ¾"size

### Emergency Driver

YH33B-04IL

4W@ 90min LiFePO4

YH11B-05WL

5W@ 90min LiFePO4



EMB08U2-080

8W@ 90min Li-ion

EMB15U2-080

15W@ 90min Li-ion



# PACKAGE INFORMATION

ITEM	QTY/CTN	G. W.	CTN SIZE	CBM
VP-27A	9pcs	9.6kg(21.2lbs)	63x30x29cm(24.8"x11.8"x11.5")	0.055m <sup>3</sup>
VP4-40A	9pcs	16.9kg(37.2lbs)	123x30x29cm(48.4"x11.8"x11.5")	0.108m <sup>3</sup>
VP4-54A	9pcs	16.9kg(37.2lbs)	123x30x29cm(48.4"x11.8"x11.5")	0.107m <sup>3</sup>
VP-80A-HV	4pcs	16kg(35.2lbs)	243x23x22cm(95.7"x9.1"x8.7")	0.123m <sup>3</sup>
VP-100A-HV	4pcs	16kg(35.2lbs)	243x23x22cm(95.7"x9.1"x8.7")	0.123m <sup>3</sup>

# CONTAINER LOADING QTY

ITEM	PCS/Pallet (1.2x1x2m)	20GP (With Pallet)	40HQ (With Pallet)	20GP (No Pallet)	40HQ (No Pallet)
VP-27A				4500pcs	10350pcs
VP4-40A				1710pcs	5400pcs
VP4-54A				1710pcs	5400pcs
VP-80A-HV	/	/	/	880pcs	2000pcs
VP-100A-HV	/	/	/	880pcs	2000pcs