

INTEGRATED T5 TUBE SERIES GLPLI-T1

Features, Benefits, Performance



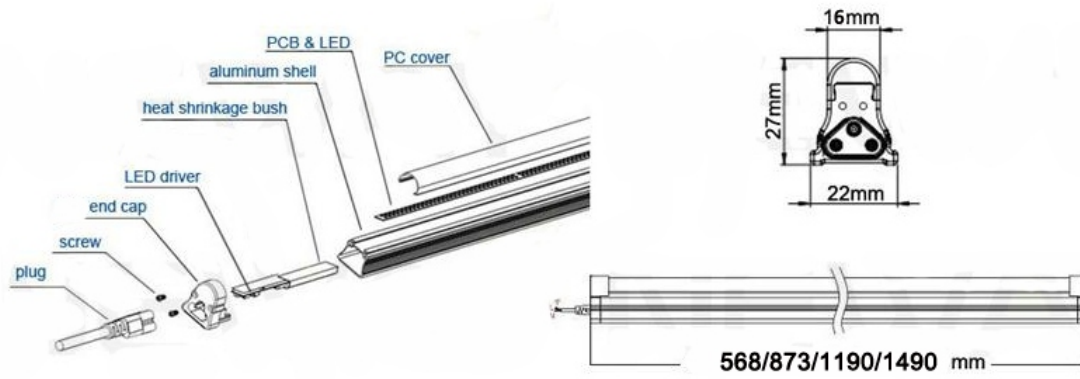
- High brightness EPISTAR 2835 LED chip
- High CRI>80Ra; CRI>90Ra available
- Can be easily installed
- 50% reduction in energy consumption
- 50,000hrs lifespan, 5 years warranty
- Vibration and impact resistant
- No mercury allowing for non-hazardous waste materials
- Instant illumination, no flicker, no buzz
- No UV emission



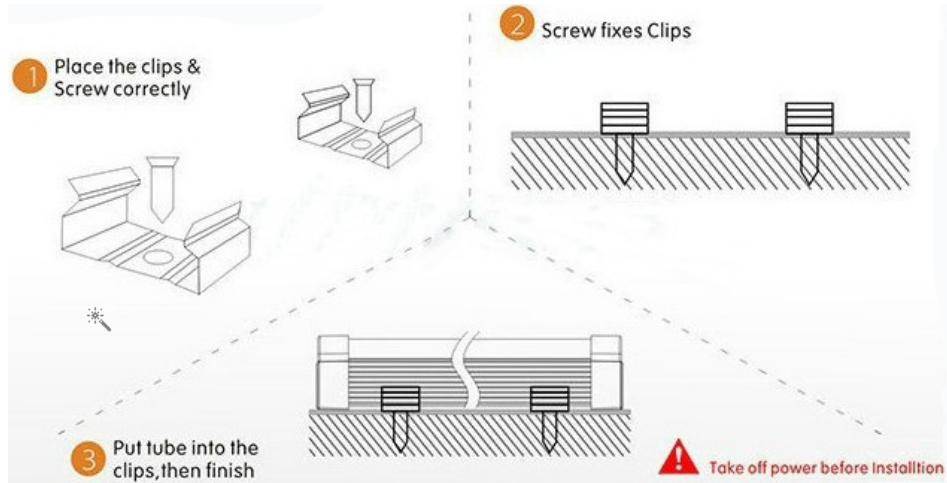
Parameters

Model	Watts	Length	Lumen	Voltage	CCT	CRI	PF	Certificate
GLPL-TI-9WAN-YYK	9W	2FT/568mm	950-1150lm	100-277VAC	3000-6500K	>80Ra	>0.95	ETL cETL DLC
GLPL-TI-15WAN-YYK	15W	3FT/867mm	1650-1750lm					ETL cETL DLC
GLPL-TI-18WAN-YYK	18W	4FT/1142mm	1850-2050lm					ETL cETL DLC
GLPL-TI-20WAN-YY	20W		2100-2250lm					ETL cETL
GLPL-TI-22WAN-YYK	22W		2350-2550lm					ETL cETL DLC
GLPL-TI-5WAN-YYK	5W	1FT/300mm	550-600lm					ETL cETL DLC

Structure



Installation



Dimensions

2FT T5 568mm
 3FT T5 873mm
 4FT T5 1190mm
 5FT T5 1490mm



*Note: Can do customized length

Packing

Length	Q'ty/CTN	Dimensions (cm)	Gross Weight
2FT	30pcs	70*25*25cm	6kg
3FT	30pcs	100*25*25cm	8kg
4FT	30pcs	130*25*25cm	10kg
5FT	30pcs	160*25*25cm	13kg