

BEST SELLER COMMERCIAL PRODUCT CATALOG



CANADIAN WHOLESALE LIGHTING
5-1525 DILWORTH DR. KELOWNA
BC. V1Y9N5, PH. 866 628 4278

Contents

LED Parking Lot Light

Pages : 01-17



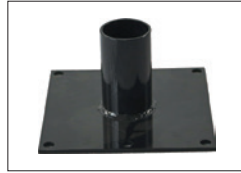
GLPKC



GLPKB



GLPL01



Bracket



Pole



GLTP-300



GLTP500



GLTP260

LED High Bay Light 18-20



GLSBAY



GLGBAY



GLFBAY



GLHB-VE



GLOBAY



GLABAY



GLLHB-D

LED Wall Pack Light

21-28



GLWP-A3



GLWP-A2



GLWP-B



GLWP-E



GLWP-B2



GLWP-B2



GLWP-C2



GLWP-D

LED Flood Light & LED Barn Light

30-32



GLFL-C2(30W/50W/80W/100W)



GLFL-C2(150W/200W)



GLFLB



GLBN-A

LED Canopy & Parking Garage Light

34-36



GLGA



GLNP-A



GLNP-B



GLNP-SM

LED Vapor Tight & Linear Strip Fixture Light

37-44



GLVPB



GLVPD160°



GLVPD



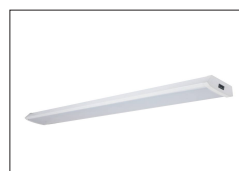
GLVPA



GLVPE



GLLSA



GLL-20061

LED Ceiling Light & Panel Light & Troffer

45-51



GLCP



GLFMA



GLFMB



GLMBS



GLBPL



Troffer

52-58



GLDLA



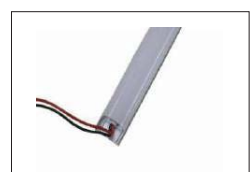
GLDKA



GLDLF



GLDLD



GLSY-T8

LED Parking Lot (GLPKC)



FEATURES

- Die-Casting Aluminum with PC lens
- IP66 Wet Location
- Surge Protection: 10KA
- Type 3, 4, 5 Distribution
- Easy to Install and change adaptor
- Luminous Efficacy 140lm/w
- Anti-Glare Design, perfect BUG
- Photocell, Motion Sensor Optional



BRACKET OPTIONAL



• Slip Fitter



• Arm/Wall Mount



• Trunion

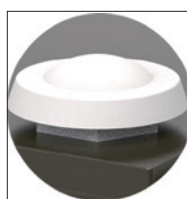


• "U" Yoke Bracket

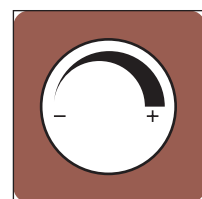
FUNCTION OPTIONAL



Photocell



Motion Sensor



Dimming

LED Parking Lot (GLPKC)

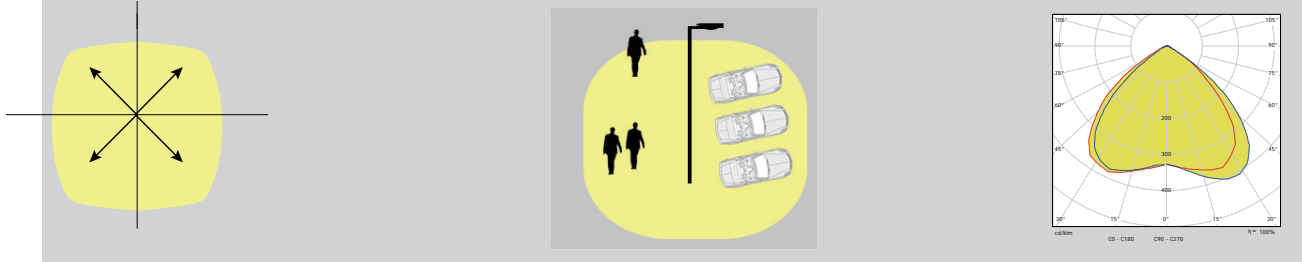
●TYPE 3



●TYPE 4



●TYPE 5



PARAMETER

| MODEL NO. | POWER | VOLTAGE | BEAM ANGLE | LUMENS |
|-----------|------------------------------|---------------------------|--------------|---------|
| GLKC-100W | 80W/100W/120W Switchable | 100-277V/347V 277-480V | TYPE 3, 4, 5 | 140lm/w |
| GLKC-150W | 100W/120W/150W Switchable | 100-277V/347V 277-480V | TYPE 3, 4, 5 | 140lm/w |
| GLKC-200W | 180W/200W/240W Switchable | 100-277V/347V 277-480V | TYPE 3, 4, 5 | 140lm/w |
| GLKC-300W | 250W/300W Switchable | 100-277V/347V 277-480V | TYPE 3, 4, 5 | 140lm/w |

LED Parking Lot (GLPKB)



FEATURES

- Die-Casting Aluminum with PC lens
- IP66 Wet Location
- Surge Protection: 10KA
- Type 2, 3, 4, 5 Distribution
- Easy to Install and change adaptor
- Luminous Efficacy 130-150lm/w
- CRI>70 or 80



BRACKET OPTIONAL



- Slip Fitter



- Arm (Square Pole 4 inch, 5 inch, 6 inch)



- Arm (Round Pole 4 inch, 5 inch, 6 inch)



- Arm(Adjustable)



- Trunnion

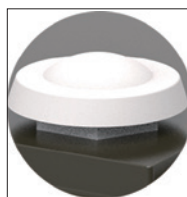


- YOKE Bracket

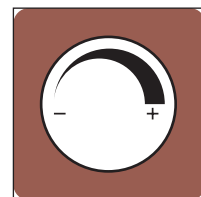
FUNCTION OPTIONAL



Photocell

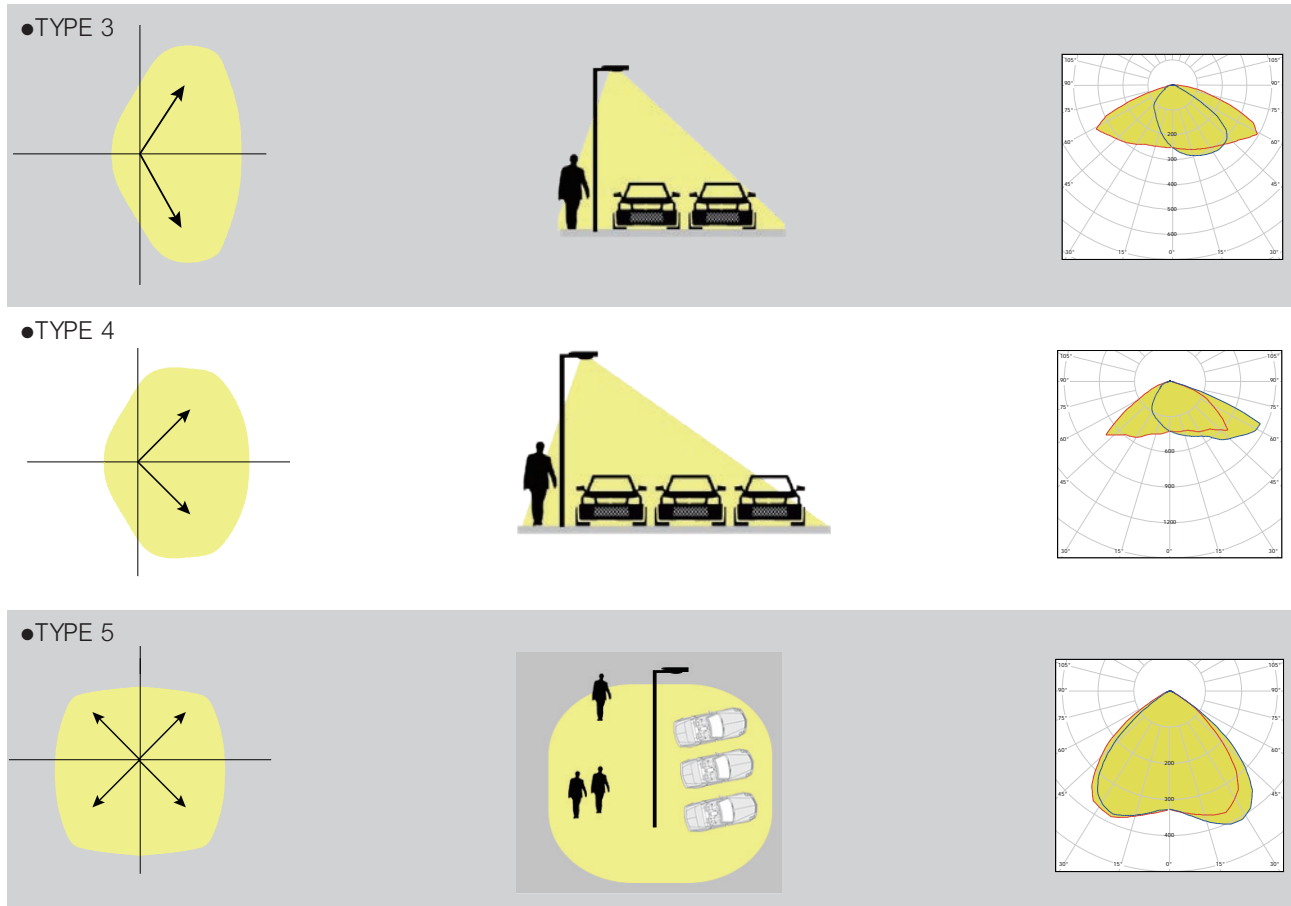


Motion Sensor



Dimming

LED Parking Lot (GLPKB)



PARAMETER

| MODEL NO. | POWER | VOLTAGE | BEAM ANGLE | LUMENS |
|------------|-------|-----------------------|--------------|-------------------|
| GLPKB-75W | 75W | 100-277Vac/277-480Vac | TYPE 3, 4, 5 | 130lm/w & 150lm/w |
| GLPKB-100W | 100W | 100-277Vac/277-480Vac | TYPE 3, 4, 5 | 130lm/w & 150lm/w |
| GLPKB-150W | 150W | 100-277Vac/277-480Vac | TYPE 3, 4, 5 | 130lm/w & 150lm/w |
| GLPKB-200W | 200W | 100-277Vac/277-480Vac | TYPE 3, 4, 5 | 130lm/w & 150lm/w |
| GLPKB-240W | 240W | 100-277Vac/277-480Vac | TYPE 3, 4, 5 | 130lm/w & 150lm/w |
| GLPKB-300W | 300W | 100-277Vac/277-480Vac | TYPE 3, 4, 5 | 130lm/w & 150lm/w |

LED Parking Lot (GLPL01)



Slip Fitter

Trunion

"U" Yoke Bracket

FEATURES

- Integrated visor for reduced glare
- IP65 rating protects against dust and water
- Suitable for ground mounting
- High Lumens 140lm/w
- Photocell optional
- L70>100,000-Hours lifespan



ADVANTAGE



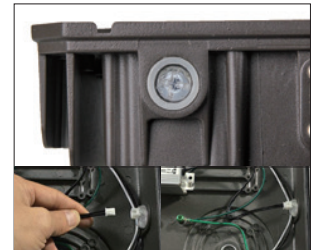
up to 130lm/w, Glare-Free to protect people eyes!



Have an integrated visor that reduces observable glare.



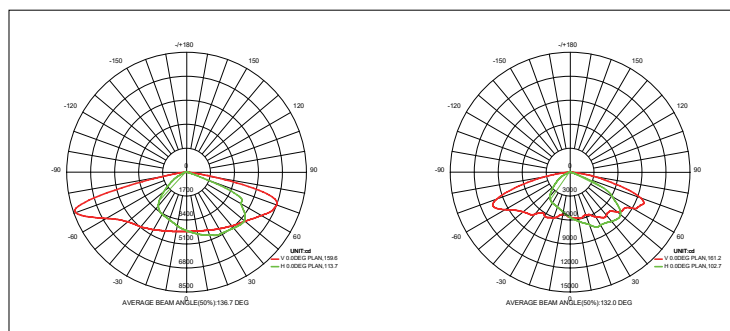
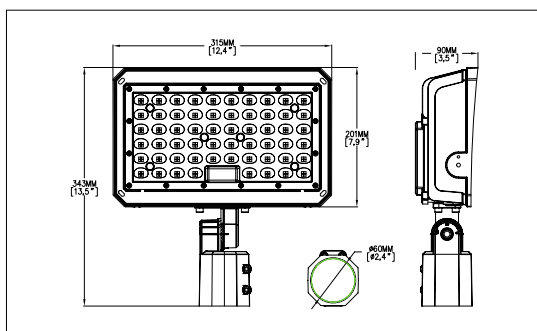
IP69K Hot Steam Scouring
Steam cleaning protection of water pressure at 100 bar (1450 psi) /80°C



Photocell:
Connect the terminal
Non-photocell:
Remove the terminal

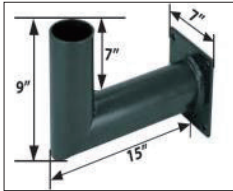
PARAMETER

| MODEL NO. | POWER | VOLTAGE | BEAM ANGLE | EFFICACY | LUMENS OUTPUT | CRI |
|-------------|-------|----------------|------------|----------|---------------|-----|
| GLPL01-150W | 150W | 100-277/347Vac | T3,T4,T5 | 140lm/w | 28000lm | 80+ |
| GLPL01-200W | 200W | 100-277/347Vac | T3,T4,T5 | 140lm/w | 28000lm | 80+ |

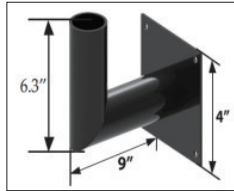


Parking Lot Light Bracket

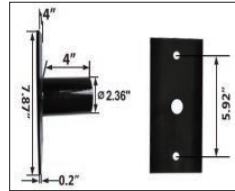
Wall Mount Bracket



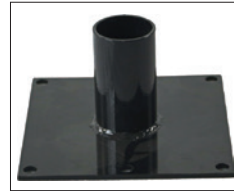
PKL-HL1



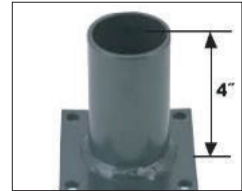
PKL-HL2



PKL-HU1

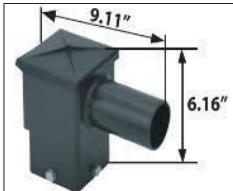


PKL-HD1

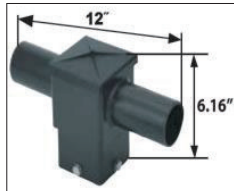


PKL-HD2

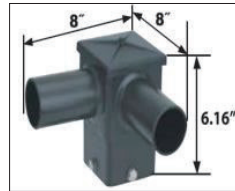
Square Horizontal Pole Bracket



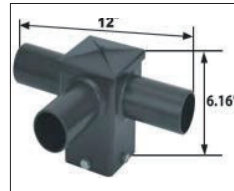
PKL-F1



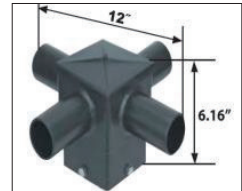
PKL-F2



PKL-FC2

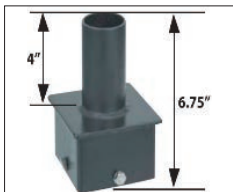


PKL-F3

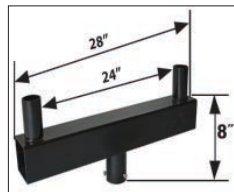


PKL-F4

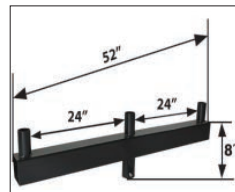
Vertical Tenon Pole Top Fitters



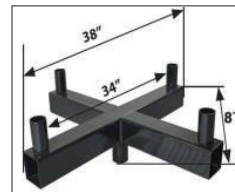
PKL-FD1



PKL-FR2

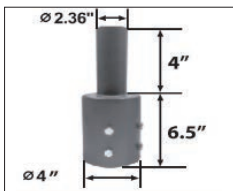


PKL-FR3

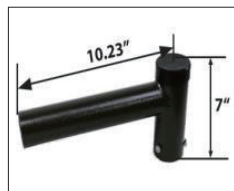


PKL-FR4

Round External Mount Horizontal Tenon



PKL-RS1



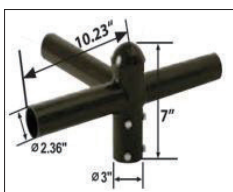
PKL-RH1



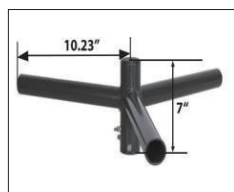
PKL-RH2



PKL-RH3



PKL-RH4



PKL-RH03



PKL-RH04

LED Post Top Lantern



1.Features

- Power Factor: ≥ 0.95
- LED Chip: Lumileds/Samsung
- CRI: $R_a \geq 70$
- Dimming: YES/No
- Cover: PC/Glass Cover/No Cover
- Photocell sensor: Y/N
- Material: Aluminum alloy + PC cover/Glass cover/No Cover
- Standard color: dark bronze/Black
- Working Temperature: $-40^{\circ}\text{F} \sim 122^{\circ}\text{F}$
- Lifespan: >54000 hours (@ $T_c=176^{\circ}\text{F}$)
- Total Harmonic Distortion: 15%

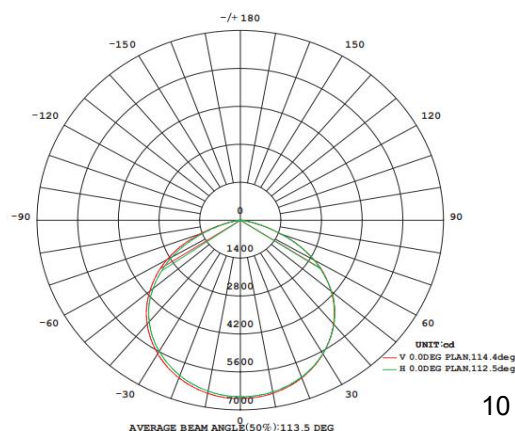
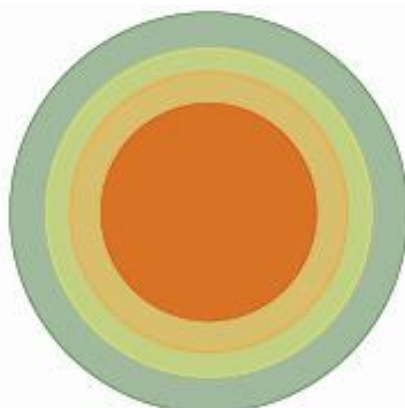
2.Application

City Urban, plaza , shopping mall , roadway ,garden ,House and general lighting applications.

3.Ordering Information

| Model | Wattage | CCT | Lumen | Input Frequency | Voltage | Warranty |
|-----------------|---------|-------|----------|-----------------|----------|----------|
| YR-GLTP300-W030 | 30watt | 5000K | 3,900lm | 50/60HZ | 100-277V | 5 years |
| YR-GLTP300-W060 | 60watt | 5000K | 7,800lm | 50/60HZ | 100-277V | 5 years |
| YR-GLTP300-W075 | 75watt | 5000K | 9,800lm | 50/60HZ | 100-277V | 5 years |
| YR-GLTP300-W090 | 90watt | 5000K | 117,00lm | 50/60HZ | 100-277V | 5 years |
| YR-GLTP300-W100 | 100watt | 5000K | 130,00lm | 50/60HZ | 100-277V | 5 years |
| YR-GLTP300-W120 | 120watt | 5000K | 156,00lm | 50/60HZ | 100-277V | 5 years |

4.Beam Angle Type V



TP500 series LED Post Top Light



The new TP500 series LED Post Top Light is the fantastic re-sult.This light is a perfect solution for outdoor parking lot and area lighting.

The body of is just so slim.But behind it is the superb system effi-cacy,heat radiation ability,and though endurance for brutal working environment.The TP500 series is from 35W to 300W,can replace up to 1000W traditional luminaire. Designed with efficiency in mind, the LED post top light has a unique funnel heat sink for better heat dissipation, adding to the life of the fixture. Separate LED driver and light source allows for easy installation of the fix-ture. This fixture is IP65 rated, making it suitable for wet and damp locations.



Technical Characteristic

| Model | CCT | CRI | Luminous Flux | System Power | Package |
|---|-------------|-----|---------------|--------------|---------|
| YR-GLTP500-W35-X-Yn | 3000K-5000K | ≥75 | 110±5%LM | 35W | 1pc/ctn |
| YR-GLTP500-W50-X-Yn | 3000K-5000K | ≥75 | 110±5%LM | 50W | 1pc/ctn |
| YR-GLTP500-W100-X-Yn | 3000K-5000K | ≥75 | 110±5%LM | 100W | 1pc/ctn |
| YR-GLTP500-W150-X-Yn | 3000K-5000K | ≥75 | 110±5%LM | 150W | 1pc/ctn |
| YR-GLTP500-W200-X-Yn | 3000K-5000K | ≥75 | 110±5%LM | 200W | 1pc/ctn |
| YR-GLTP500-W300-X-Yn | 3000K-5000K | ≥75 | 110±5%LM | 300W | 1pc/ctn |
| Input Voltage: 100-277V or 200V-480V LED CHIP: Philips 3030 LED driver: Meanwell driver or SOSEN driver 1-10V Dimmable | | | | | |
| Working temperature: -40 ~ + 65°C | | | | | |

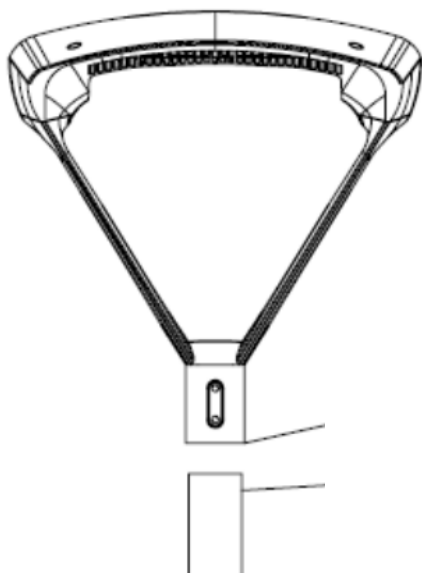
| | | | |
|-------------------|--|---------------|-------|
| Color temperature | 3000K , 3500K | 4000K , 4500K | 5000K |
| CRI | >7 | | |
| LED chip | Philips | | |
| Lumen Efficacy | 110-115 LM/W | | |
| Input Power | 35W, 50W, 100W, 150W, 200W, 300W | | |
| Viewing Angle | 100*140/90*140/90*120/85*135/90/120 Degree | | |
| Input Voltage | 120-277Vac 50/60Hz or 200-480V | | |
| Driver model | Meanwell Driver or Sosen Driver | | |
| PFC | >0. | | |
| Waterproof Rating | IP65 | | |

Materials

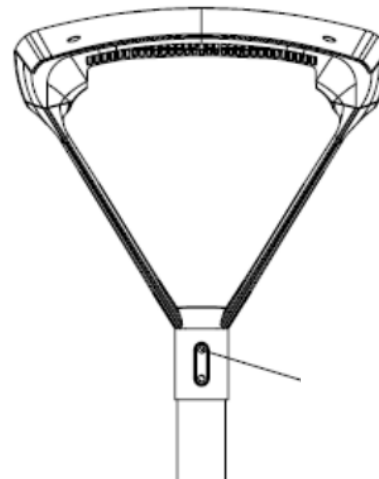
| | |
|-----------------------|--------------------------|
| Operating Temperature | -40°C TO 45°C |
| Operating Humidity | 20%-90% RH |
| Storage Temperature | -30°C TO 80°C |
| Storage Humidity | 10%-95% |
| Application | Outdoor |
| Safety Certification | ETL、cETL、DLC、CE、ROHS、FCC |
| Warranty Time | 5 Years |

Installation Instruction:

Round Pole Diameter
76MM



1 . The Pole's and the Bracket
Di-iameter is 60MM



2 Tighten the M8 screws.



Dimmable cable
Blue is “+”
White is “-”



3 Connect the power lines.



A



B



C

Adapter



D



E

GLTP LED Post Top Lights



The TP Series Post Top Lights is the fantastic result, they are high performance LED fixtures ranging from 20-100 watt and are available 100-277V and 300-480V.

This series come with 6 main variant:style A-F,to mostly suit the local demand and easier for our customer in making pro-ject.

Features:

- ETL,DLC and FCC listed
- Voltage is 120-277V & 347V-480V
- IP65 Waterproof rated
- Photocell and SPD available
- Type V and Type IV light distribution available
- 5 Years Warranty
- 20W 35W 50W and 100W
- Efficacy > 120LM/W
- Operating temperature is -40°C to 55°C
- Installation pole diameter: 60mm and 76mm available
- Advantage: 6 kinds of mounting brackets



100W LED Post Top Light



Applications:

It is mainly designed for Site, hospital, garden, park, area, roadway, car parking lots,plaza light-ing,outdoor sports etc,with accurate light distribution design,they have very good uniformity to meet flood lighting requirements for these applications.

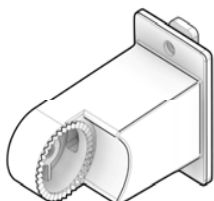


Post top Light with slip fitter

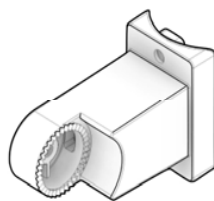
Mounting:

- Option A : Slip fitter.
- Option B2: Arm mount for square pole, angle adjustable
- Option C2: Arm mount for round pole, angle adjustable.
- Option D2: Arm mount for square pole, angle adjustable.
- Option E2: Arm mount for round pole, angle adjustable.
- Option F: Wall mount. angle adjustable.

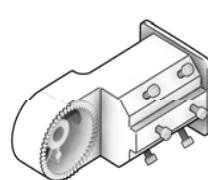
Mounting Options



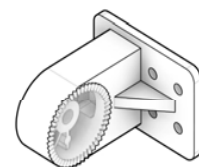
Arm Mount (Square Pole)



Arm Mount (Round Pole)



Slipfitter (2.375" O.D.)

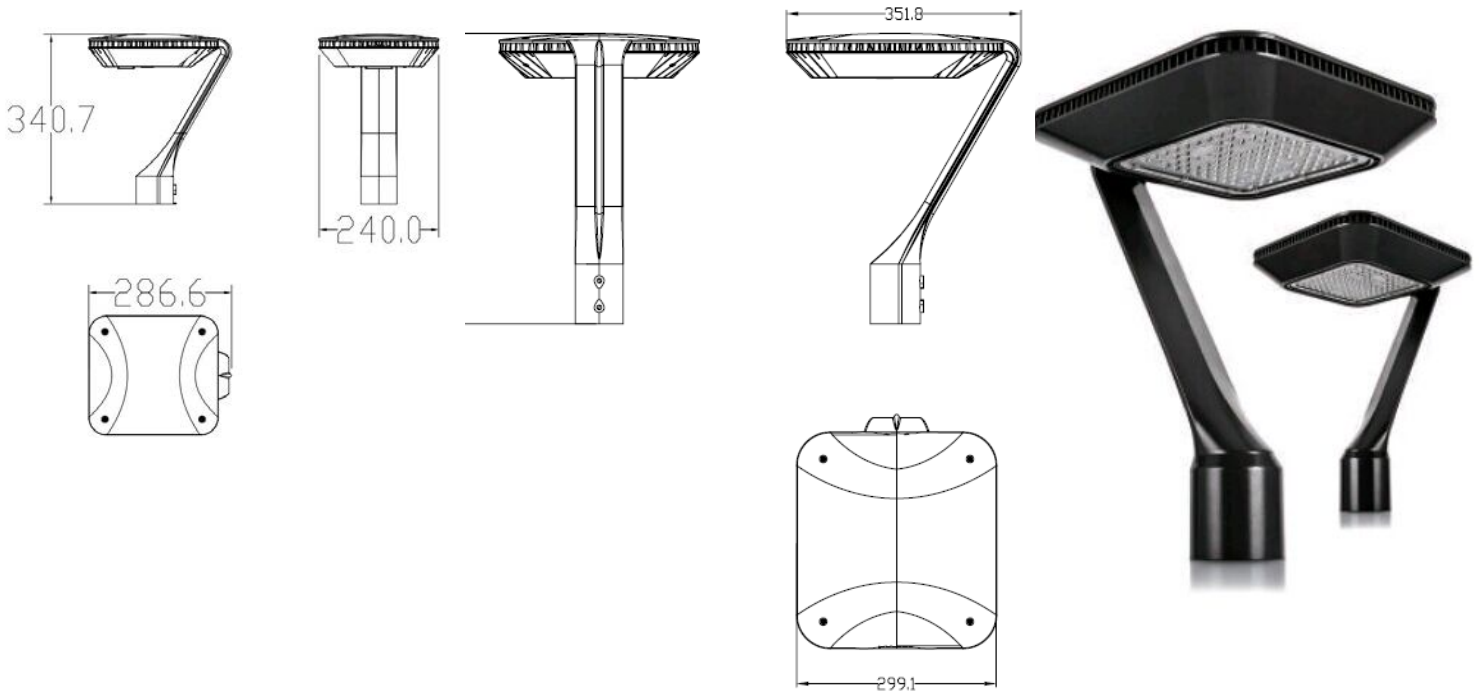


Trunnion Mount

Dimension:
Unit: mm

Small size: 20W 35W

Medium size: 50W 100W



Ordering Number Logic:

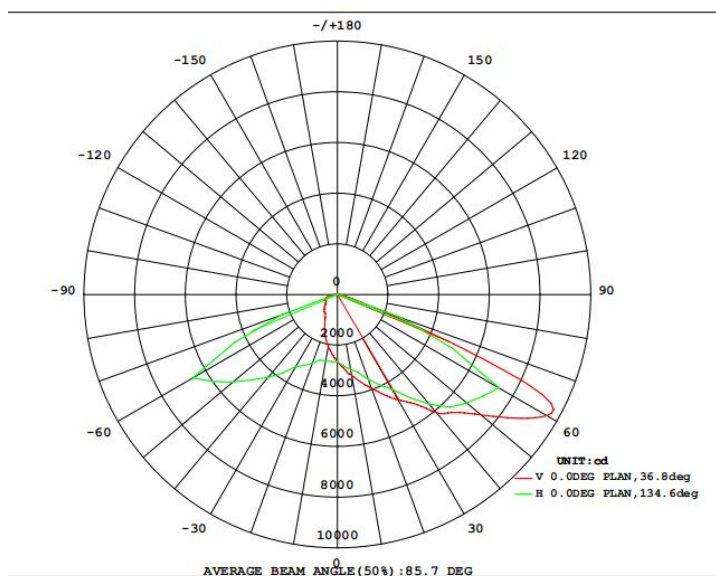
EXAMPLE: YR-GLTP325-W100-NP-Y1-Z1

| Fixture Type | Wattage | Photocell (option) | Voltage | Mounting |
|---|--|---|---|---|
| YR-GLTP260 = The housing of the 20w and 35w YR-GLTP325 = The housing of the 50w and 100w | -W020 = 20w -W035 = 35W -W50 = 50W -W100 = 100W | -P = Photocell -NP = Without Photocell | -Y1 = 100-277V(SOSEN driver) -Y2 = 100-277V(Meanwell driver) -Y3 = 347-480V(Meanwell driver) | -Z1 = stands a regular vertical installation -Z2 = Mounting available (Slipfitter, Square pole mounting and Round pole mounting) |

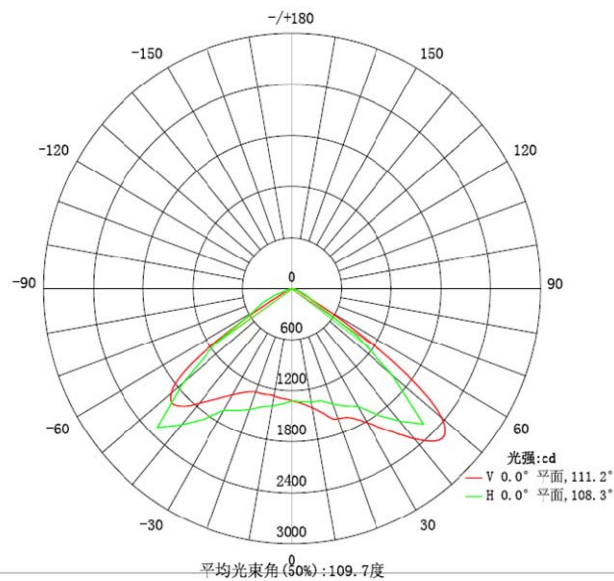
Note: 1, The 100-277V Meanwell driver are limited to 50W and 100W only
 2, The 347-480V Meanwell driver are limited to 50W and 100W only

Photometric:

Type IV




Type V

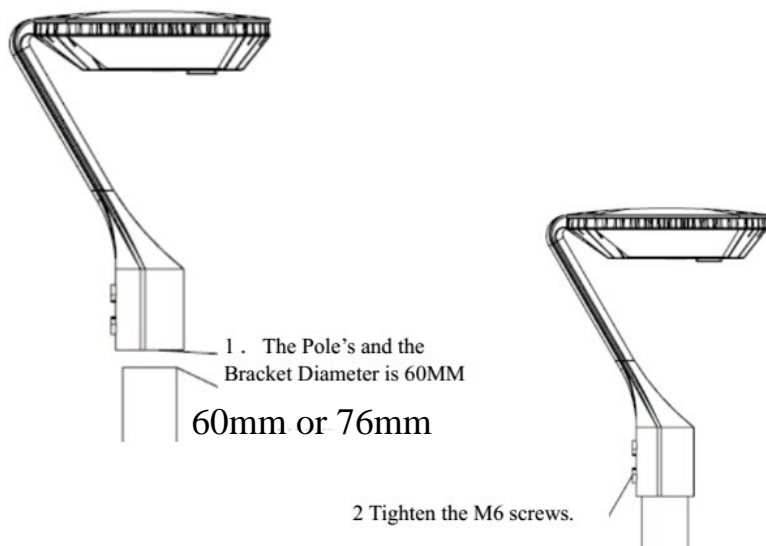


Mounting Information:



| | |
|-----------|---|
| Adapter | 8 kinds |
| Photocell |  |

Installation diameter: 60mm or 76mm options



High Bay Light (GLSBay)



FEATURES

- 2020 Private mold, unique design
- High Lumens Up to 150lm/w
- IP66 Wet Location
- Power and CCT selectable.
- Built-in Bi-Level Sensor
- High Quality driver
- 1-10V dimmable optional

Power & 3CCT Selectable



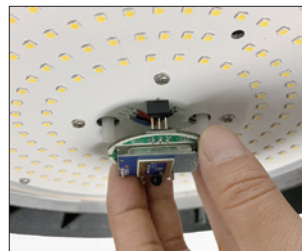
BI-LEVEL SENSOR



Bi-level Sensor optional
Built-in Sensor
Max Height 15m(50ft)



Up to 140-160lm/w
DLC Premium
Lumileds (Philips) Chips
60°/90°/120° optional



Assemble Sensor Easily
Assemble or remove
Sensor Easily



Power and CCT Selectable
Easy to make inventory reserve
3-Power like 100W/120W/150W
3-CCT like 4000K-5000K-5700K

PARAMETER

| MODEL NO. | POWER | VOLTAGE | BEAM ANGLE | LUMENS | CRI | Dimmable |
|-----------|----------------|------------|--------------|---|-----|--------------|
| GLHBS-100 | 80W/100W/120W | 100-277Vac | 60° 90° 120° | 140lm/w @120W 145lm/w @100W 150lm/w @80W | 80+ | 1-10V/Sensor |
| GLHBS-150 | 100W/120W/150W | 100-277Vac | 60° 90° 120° | 140lm/w @150W 145lm/w @120W 150lm/w @ 100W | 80+ | 1-10V/Sensor |
| GLHBS-200 | 150W/180W/200W | 100-277Vac | 60° 90° 120° | 140lm/w @ 200W 145lm/w @ 180W 150lm/w @150W | 80+ | 1-10V/Sensor |
| GLHBS-240 | 180W/200W/240W | 100-277Vac | 60° 90° 120° | 140lm/w @ 240W 145lm/w @ 200W 150lm/w @180W | 80+ | 1-10V/Sensor |

ECO LED High Bay (GLGBay)



Lens Version



Dome Cover Version

FEATURES

- Die-Casting Aluminum
- PC Lens or Dome Cover
- IP66 Wet Location
- 130lm/w, 160lm/w, 180lm/w optional
- Multi-Voltage: 120-347Vac
- 1-10V dimmable in standard
- Bi-level Sensor optional



BI-LEVEL SENSOR



Easy to assemble or separate the sensor

PARAMETER

| MODEL NO. | POWER | VOLTAGE | BEAM ANGLE | LUMENS |
|-----------|-------|-----------------------|--------------|-------------------------|
| GLHB-100G | 100W | 100-277vac/120-347Vac | 60° 90° 120° | 130lm/w 160lm/w 180lm/w |
| GLHB-150G | 150W | 100-277vac/120-347Vac | 60° 90° 120° | 130lm/w 160lm/w 180lm/w |
| GLHB-200G | 200W | 100-277vac/120-347Vac | 60° 90° 120° | 130lm/w 160lm/w 180lm/w |
| GLHB-240G | 240W | 100-277vac/120-347Vac | 60° 90° 120° | 130lm/w 160lm/w 180lm/w |

NSF LED High Bay (GLOBay)



FEATURES

- NSF approval for food industries
- IP66 Smooth Body, make cleaning work easily
- IP69K hot steam scouring
- No Toxic Chemicals in Material
- No glass and no exposed screws



ADVANTAGE



NSF approval
for FOOD Industries



Seamless Design
Diminished dust and
easy to clean



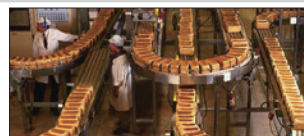
Seamless Design
Diminished dust and
easy to clean



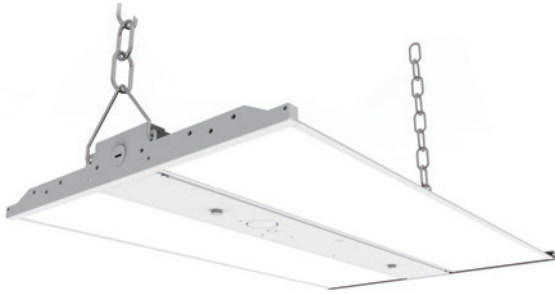
IP69K Hot Steam Scouring
Steam cleaning protection
of water pressure at 100
bar (1450 psi) /80°C

PARAMETER

| MODEL NO. | POWER | VOLTAGE | BEAM ANGLE | LUMENS | CRI |
|------------|-------|-----------------------|--------------|---------|-----|
| GLHBO-100W | 100W | 100-277Vac/277-480Vac | 60° 90° 120° | 140lm/w | 80+ |
| GLHBO-150W | 150W | 100-277Vac/277-480Vac | 60° 90° 120° | 140lm/w | 80+ |
| GLHBO-200W | 200W | 100-277Vac/277-480Vac | 60° 90° 120° | 140lm/w | 80+ |
| GLHBO-240W | 240W | 100-277Vac/277-480Vac | 60° 90° 120° | 140lm/w | 80+ |



LED Linear High Bay (GLLHB-D)

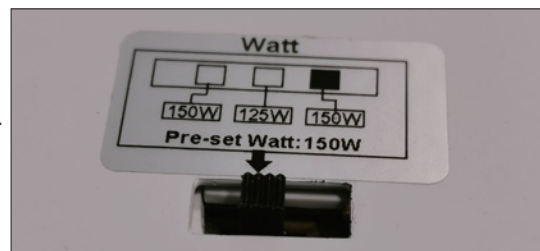


FEATURES

- Power selectable
- CCT Selectable
- Multi-Voltage: 100-277/347Vac, 1-10V in standard
- High Lumens 150lm/w with well-distributed and soft light.
- Lifespan L80>100,000 Hours
- Sensor and Emergency optional



AVAILABLE OPTIONS



PARAMETER

| MODEL NO. | Dimension | POWER | VOLTAGE | BEAM ANGLE | CRI | LUMENS |
|--------------------|-----------|--------------------------|-----------------------|------------|-----|---------|
| GLLHB-60/80/100D | 2FT | 60W/80W/100W(Settable) | 100-277VAC/120-347VAC | 120° | 80+ | 150lm/w |
| GLLHB-125/150/165D | 2FT | 125W/150W/165W(Settable) | 100-277VAC/120-347VAC | 120° | 80+ | 150lm/w |
| GLLHB-180/200/220D | 4FT | 180W/200W/220W(Settable) | 100-277VAC/120-347VAC | 120° | 80+ | 150lm/w |
| GLLHB-250/300D | 4FT | 250W/300W(Settable) | 100-277VAC/120-347VAC | 120° | 80+ | 150lm/w |

LED Mini Wall Pack (GLWP-A3)

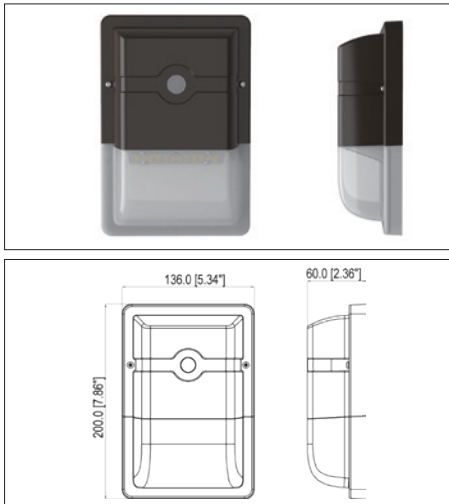


20W/25W

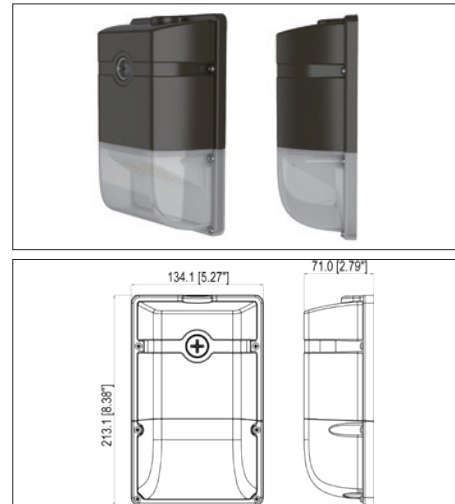


30W/35W

DIMENSION



DIMENSION



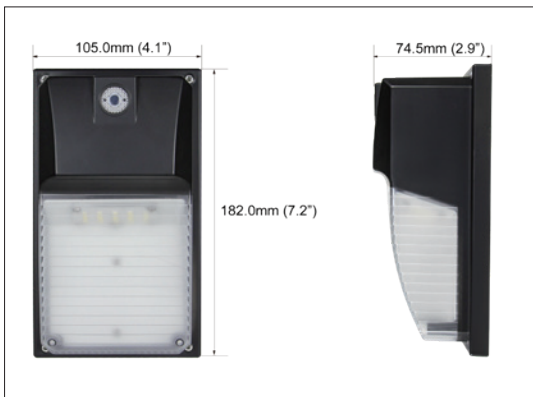
PARAMETER

| MODEL NO. | POWER | VOLTAGE | BEAM ANGLE | LUMENS | CRI | Function |
|-----------|-------|------------|------------|---------|-----|-----------|
| GLWP-20A3 | 20W | 100-277Vac | 120° | 110lm/w | 80+ | Photocell |
| GLWP-25A3 | 25W | 100-277Vac | 120° | 110lm/w | 80+ | Photocell |
| GLWP-30A3 | 30W | 100-277Vac | 120° | 110lm/w | 80+ | Photocell |
| GLWP-35A3 | 35W | 100-277Vac | 120° | 110lm/w | 80+ | Photocell |

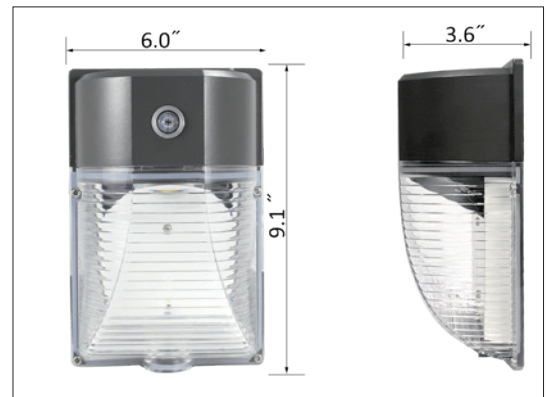
Mini LED Wall Pack(GLWP-A2)



DIMENSION



DIMENSION



PARAMETER

| MODEL NO. | POWER | VOLTAGE | BEAM ANGLE | LUMENS | CRI | Function |
|-----------|-------|------------|------------|---------|-----|-----------|
| GLWP-18A2 | 18W | 100-277Vac | 120° | 110lm/w | 80+ | Photocell |
| GLWP-26A2 | 26W | 100-277Vac | 120° | 110lm/w | 80+ | Photocell |

LED Wall Pack (GLWP-B)

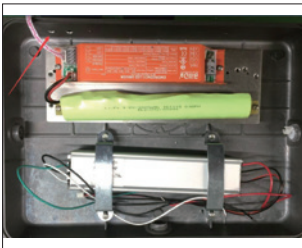


FEATURES

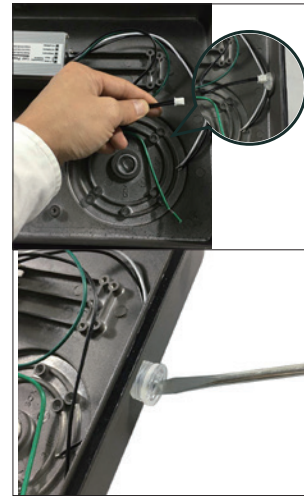
- Wet Location
- Die-Casting Aluminum
- PC cover
- Photocell Dusk to Dawn
- Luminous Efficacy: 120lm/w
- Lifespan: L80>100,000hours



EMERGENCY



PHOTOCELL EX-CHANGEABLE



PARAMETER

| MODEL NO. | POWER | VOLTAGE | BEAM ANGLE | LUMENS | CRI |
|-----------|-------|----------------------------------|------------|-----------------|-----|
| GLWP-42B | 42W | 100-277Vac/120-347Vac/277-480Vac | 100° | 120lm/w-130lm/w | 80+ |
| GLWP-60B | 60W | 100-277Vac/120-347Vac/277-480Vac | 100° | 120lm/w-130lm/w | 80+ |
| GLWP-80B | 80W | 100-277Vac/120-347Vac/277-480Vac | 100° | 120lm/w-130lm/w | 80+ |
| GLWP-100B | 100W | 100-277Vac/120-347Vac/277-480Vac | 100° | 120lm/w-130lm/w | 80+ |
| GLWP-120B | 120W | 100-277Vac/120-347Vac/277-480Vac | 100° | 120lm/w-130lm/w | 80+ |

Power and 3CCT Switchable LED Wall Pack (GLWP-E)



Power and 3CCT Selectable

LM80 LED chips
L70>100,000 Hours

High Quality Driver
Multi-Voltage
100-277V/347V

High Transmission
Rate Daylight-
Resistant PC cover



LM80 LED chips
L70>100,000 Hours

Power and 3CCT
Switchable

Junction-Box Installation
Direct Wall Mount



PARAMETER

| MODEL NO. | POWER | VOLTAGE | BEAM ANGLE | LUMENS | CRI | Function |
|------------|----------------|---------------|------------|---------|-----|-----------|
| GLWPE-40W | 40W/60W/80W | 100-277V/347V | 120° | 120lm/w | 80+ | Photocell |
| GLWPE-60W | 50W/60W/80W | 100-277V/347V | 120° | 120lm/w | 80+ | Photocell |
| GLWPE-80W | 60W/80W/100W | 100-277V/347V | 120° | 120lm/w | 80+ | Photocell |
| GLWPE-120W | 100W/120W/150W | 100-277V/347V | 120° | 120lm/w | 80+ | Photocell |

Glass Cover LED Wall Pack (GLWP-B2)



Glass Cover

FEATURES

- Tempered Glass Cover
- Photocell Dusk to Dawn
- Easy to Installation
- Die-Casting Aluminum with
- IP66 Wet Location
- Luminous Efficacy 120lm/w
- Multi-Voltage:120-347V



BRACKET OPTIONAL

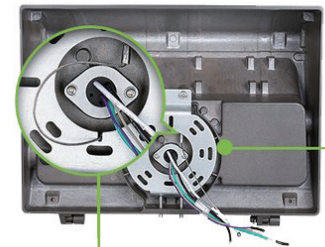
Direct Wall Mount



Conduit Mount



Robust Design
Die-casting Aluminum



Safety Rope

Compatible junction box

Shatter-proof
Glass Refractor



Photocell Included

PARAMETER

| MODEL NO. | POWER | VOLTAGE | BEAM ANGLE | LUMENS | CRI | Function |
|---------------|-------|---------------|------------|---------|-----|-----------|
| GLWP-42B2(G) | 42W | 100-277V/347V | 120° | 120lm/w | 80+ | Photocell |
| GLWP-60B2(G) | 60W | 100-277V/347V | 120° | 120lm/w | 80+ | Photocell |
| GLWP-80B2(G) | 80W | 100-277V/347V | 120° | 120lm/w | 80+ | Photocell |
| GLWP-100B2(G) | 100W | 100-277V/347V | 120° | 120lm/w | 80+ | Photocell |
| GLWP-120B2(G) | 120W | 100-277V/347V | 120° | 120lm/w | 80+ | Photocell |

Cambered LED Wall Pack (GLWP-B2)



DLC PREMIUM DESIGN



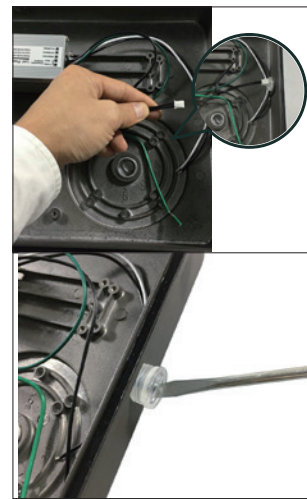
Pass DLC Premium request
Zonal lumen 0-90° >97%

FEATURES

- Die-Casting Aluminum with PC cover
- IP65 Wet Location
- 130-150lm/w
- Multi-Voltage: 120-347V
- Photocell optional
- Lifespan: L80 > 100,000 hours



PHOTOCELL EX-CHANGEABLE



PARAMETER

| MODEL NO. | POWER | VOLTAGE | BEAM ANGLE | LUMENS | CRI |
|------------|-------|------------------------------|------------|-----------------|-----|
| GLWP-42B2 | 42W | 100-277Vac/120-347Vac/480Vac | 100° | 130lm/w-150lm/w | 80+ |
| GLWP-60B2 | 60W | 100-277Vac/120-347Vac/480Vac | 100° | 130lm/w-150lm/w | 80+ |
| GLWP-80B2 | 80W | 100-277Vac/120-347Vac/480Vac | 100° | 130lm/w-150lm/w | 80+ |
| GLWP-100B2 | 100W | 100-277Vac/120-347Vac/480Vac | 100° | 130lm/w-150lm/w | 80+ |
| GLWP-120B2 | 120W | 100-277Vac/120-347Vac/480Vac | 100° | 130lm/w-150lm/w | 80+ |

Full Cut off LED Wall Pack(GLWP-C2)



Wall Mounted



Arm Bracket

FEATURES

- Die-Casting Aluminum with PC cover
- IP65 Wet Location
- 130-150lm/w
- Multi-Voltage:120-347Vac
- Photocell optional
- Lifespan:L80>100,000hours



PHOTOCELL(SUPPORT REMOVABLE)



PARAMETER

| MODEL NO. | POWER | VOLTAGE | BEAM ANGLE | LUMENS | CRI |
|------------|-------|-------------------|------------|-----------------|-----|
| GLWP-42C2 | 42W | 100-277V/120-347V | 100° | 130lm/w-150lm/w | 80+ |
| GLWP-60C2 | 60W | 100-277V/120-347V | 100° | 130lm/w-150lm/w | 80+ |
| GLWP-80C2 | 80W | 100-277V/120-347V | 100° | 130lm/w-150lm/w | 80+ |
| GLWP-100C2 | 100W | 100-277V/120-347V | 100° | 130lm/w-150lm/w | 80+ |

Adjustable LED Wall Pack (GLWP-D)



FEATURES

- Die-Casting Aluminum with PC lens
- IP66 Wet Location
- Efficacy: 120-130lm/w
- Multi-Voltage: 120-347Vac
- Type 2, 3, 4, 5 Distribution
- Easy to Install and change adaptor



ADVANTAGE



Adjustable 0-90°



Photocell optional



Multi-Volt: 100-277/347Vac



Glare-Free Lens

PARAMETER

| MODEL NO. | POWER | VOLTAGE | BEAM ANGLE | LUMENS |
|-----------|-------|---------------------|------------|---------|
| GLWP-20D | 20W | 100-277Vac/100-347V | 100° | 120lm/w |
| GLWP-30D | 30W | 100-277Vac/100-347V | 100° | 120lm/w |
| GLWP-40D | 40W | 100-277Vac/100-347V | 100° | 120lm/w |
| GLWP-60D | 60W | 100-277Vac/100-347V | 100° | 120lm/w |
| GLWP-80D | 80W | 100-277Vac/100-347V | 100° | 120lm/w |
| GLWP-100D | 100W | 100-277Vac/100-347V | 100° | 120lm/w |
| GLWP-120D | 120W | 100-277Vac/100-347V | 100° | 120lm/w |

LED Area Light/Flood Light (GLFL-C2, GLFL-C3)



1/2 NTP Knuckle Bracket



"U" Yoke Bracket

ADVANTAGE



Have an integrated visor that reduces observable glare.



Suitable for ground mounting
Specialized Drainage Notch
For Drain away water.
Don't worry the water will go
into the lamp body!



Photocell:
Connect the terminal
Non-photocell:
Remove the terminal



up to 120lm/w, Glare-Free to
protect people eyes!

PARAMETER



| MODEL NO. | POWER | VOLTAGE | BEAM ANGLE | LUMENS | CRI |
|------------|-------|---------------------|------------|---------|-----|
| GLFL-30C2 | 26W | 100-277Vac | 100° | 120lm/w | 80+ |
| GLFL-50C2 | 50W | 100-277Vac | 100° | 120lm/w | 80+ |
| GLFL-80C3 | 80W | 100-277Vac/120-347V | 100° | 120lm/w | 80+ |
| GLFL-100C3 | 100W | 100-277Vac/120-347V | 100° | 120lm/w | 80+ |

LED Flood Area Light (GLFL-C2)



1/2 NTP Knuckle

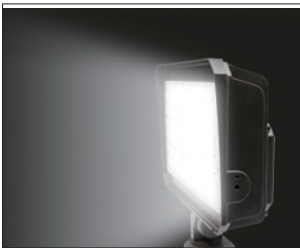


"U" Yoke Bracket



Trunion

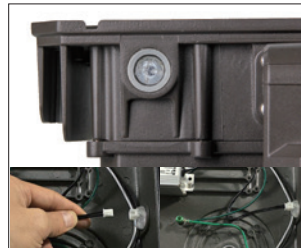
ADVANTAGE



Have an integrated visor that reduces observable glare.



Suitable for ground mounting
Specialized Drainage Notch
For Drain away water.
Don't worry the water will go
into the lamp body!



Photocell:
Connect the terminal
Non-photocell:
Remove the terminal



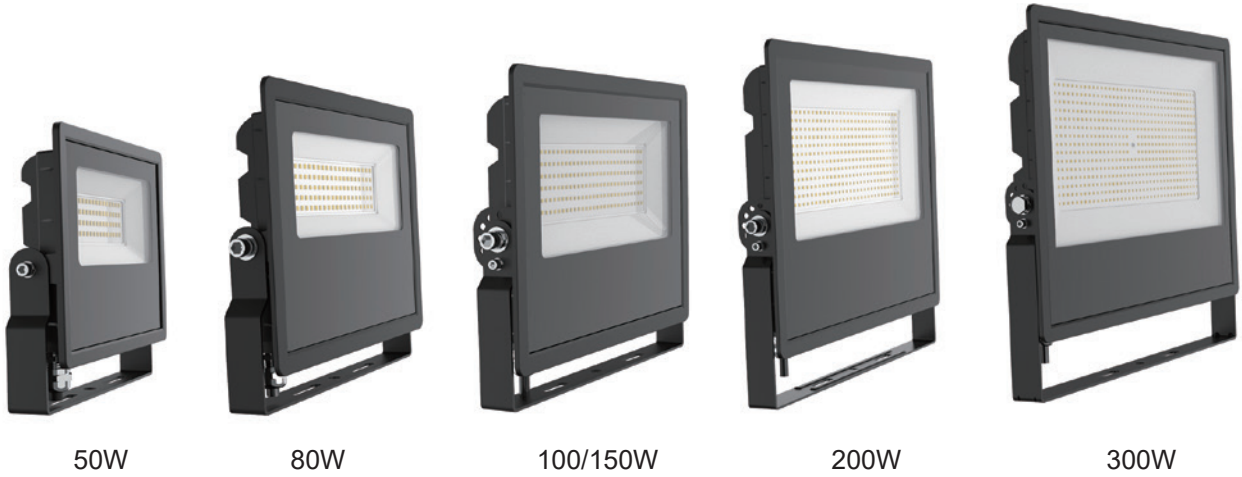
up to 120lm/w, Glare-Free to
protect people eyes!

PARAMETER



| MODEL NO. | POWER | VOLTAGE | BEAM ANGLE | LUMENS | CRI |
|-------------|-------|-----------------|------------|---------|-----|
| GLPL01-100W | 100W | 100-277Vac/347V | T3,T4,T5 | 120lm/w | 80+ |
| GLPL01-150W | 150W | 100-277Vac/347V | T3,T4,T5 | 120lm/w | 80+ |
| GLPL01-200W | 20 0W | 100-277Vac/347V | T3,T4,T5 | 120lm/w | 80+ |

LED Flood Area Light(GLFLB)



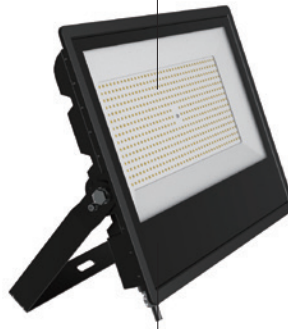
FEATURES

- Die-Casting Aluminum
- Tempered Glass Cover
- IP66 Wet Location
- 120lm/w CRI > 80Ra
- Internal High Quality Driver
- Multi-Voltage: 100-277V/347V



LM80 LED Chips
L70>100,000 Hours

Die-Casting Aluminum Body
With good heat dissipation



Tempered Glass Cover
Daylight-Resistant



Internal High Quality Driver

PARAMETER

| MODEL NO. | POWER | VOLTAGE | BEAM ANGLE | LUMENS | CRI |
|------------|-------|---------------|------------|---------|-----|
| GLFLB-50W | 50W | 100-277V/347V | 120° | 120lm/w | 80+ |
| GLFLB-80W | 80W | 100-277V/347V | 120° | 120lm/w | 80+ |
| GLFLB-100W | 100W | 100-277V/347V | 120° | 120lm/w | 80+ |
| GLFLB-150W | 150W | 100-277V/347V | 120° | 120lm/w | 80+ |
| GLFLB-200W | 200W | 100-277V/347V | 120° | 120lm/w | 80+ |
| GLFLB-300W | 300W | 100-277V/347V | 120° | 120lm/w | 80+ |

LED Barn Light (GLBN-A)



FEATURES

- Die-Casting Aluminum
- Tempered Glass Cover
- IP66 Wet Location
- 120lm/w CRI > 80Ra
- Built-in High Quality Driver



AVAILABLE OPTIONS



Photocell



Shorting Cap

PARAMETER

| MODEL NO. | POWER | VOLTAGE | CCT | BEAM ANGLE | CRI |
|--------------|-------|------------|-------|------------|-----|
| GLBN-42A-XX | 42W | 100-277Vac | 5000K | 120° | 70+ |
| GLBN-58A-XX | 58W | 100-277Vac | 5000K | 120° | 70+ |
| GLBN-42AC-XX | 42W | 100-277Vac | 5000K | 120° | 70+ |

LED Canopy/Garage (GLPGA)

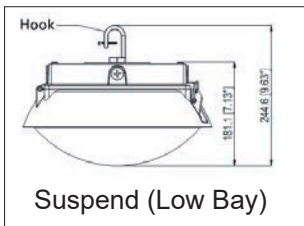
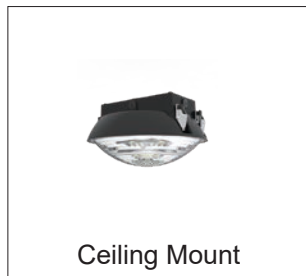


FEATURES

- Die-Casting Aluminum
- PC Lens IP65Wet Location
- Luminous Efficacy 120lm/w
- Multi-Voltage: 120-347Vac
- 1-10V dimmable in standard
- Bi-level Sensor optional



INSTALLATION

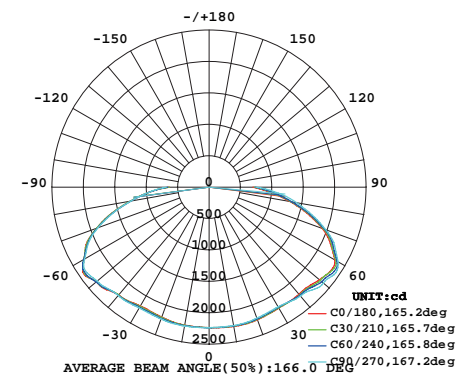


Emergency Inside

Microwave Sensor

Easy To Install

PHOTOMETRIC



Beam Angle 170°

PARAMETER

| MODEL NO. | POWER | POWER | BEAM ANGLE | LUMENS | LUMENS |
|------------|-------|-------------------|------------|---------|--------|
| GLPGA-40W | 40W | 100-277V/120-347v | 170° | 130LM/W | 80+ |
| GLPGA-60W | 60W | 100-277V/120-347v | 170° | 130LM/W | 80+ |
| GLPGA-80W | 80W | 100-277V/120-347v | 170° | 130LM/W | 80+ |
| GLPGA-100W | 100W | 100-277V/120-347v | 170° | 130LM/W | 80+ |

LED Canopy (GLCNP-A)

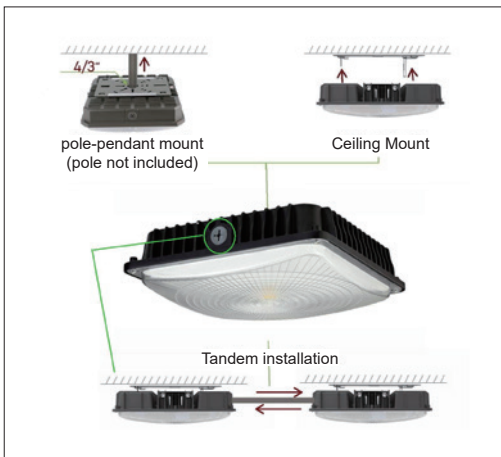


FEATURES

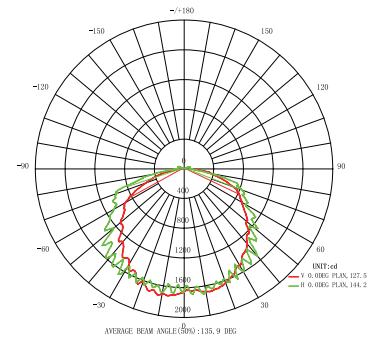
- Die-Casting Aluminum
- PC Lens IP65Wet Location
- Luminous Efficacy 120lm/w
- Multi-Voltage: 120-347Vac
- 1-10V dimmable optional
- Bi-level Sensor optional



INSTALLATION



PHOTOMETRIC



PARAMETER

| MODEL NO. | POWER | VOLTAGE | CCT | BEAM ANGLE | CRI |
|------------|-------|------------|-------|------------|-----|
| GLCNP-50A | 50W | 100-277Vac | 5000K | 120° | 80+ |
| CNP-75A | 75W | 100-277Vac | 5000K | 120° | 80+ |
| GLCNP-100A | 100W | 100-277Vac | 5000K | 120° | 80+ |
| GLCNP-120A | 120W | 100-277Vac | 5000K | 120° | 80+ |

LED Canopy (GLCNP-B)

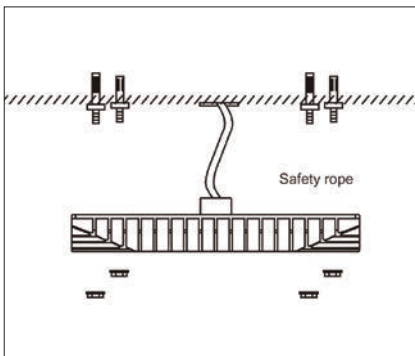


FEATURES

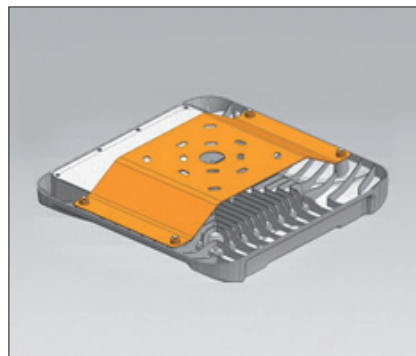
- Die-Casting Aluminum
- Tempered Glass Cover
- IP66 Wet Location
- 130lm/w CRI > 80Ra
- Internal High Quality Driver
- Multi-Voltage: 100-277V/347V



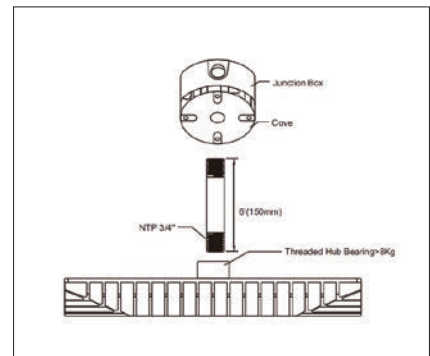
INSTALLATION



Surface Mount



Junction Box Mount



3/4" Pole Pedant

PARAMETER

| MODEL NO. | POWER | VOLTAGE | LUMENS | BEAM ANGLE | CRI |
|------------|-------|---------------|---------|------------|-----|
| GLCNP-75B | 75W | 100-277V/347V | 130lm/w | 120° | 80+ |
| GLCNP-100B | 100W | 100-277V/347V | 130lm/w | 120° | 80+ |
| GLCNP-120B | 120W | 100-277V/347V | 130lm/w | 120° | 80+ |
| GLCNP-150B | 150W | 100-277V/347V | 130lm/w | 120° | 80+ |
| GLCNP-200B | 200W | 100-277V/347V | 130lm/w | 120° | 80+ |
| GLCNP-240B | 240W | 100-277V/347V | 130lm/w | 120° | 80+ |

LED Canopy (GLCNP-SM)



Low Cover



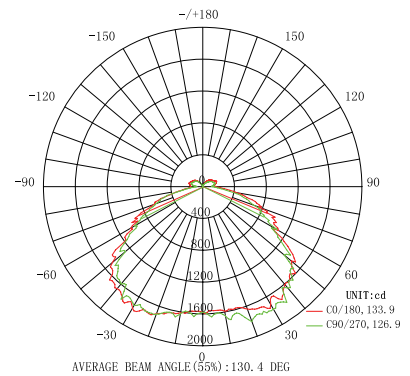
High Cover

FEATURES

- Die-Casting Aluminum
- PC Lens IP65Wet Location Luminous
- Efficacy 120lm/w
- Multi-Voltage: 120-347Vac



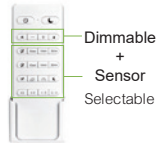
Photometric



PARAMETER

| MODEL NO. | POWER | VOLTAGE | CCT | BEAM ANGLE | Luemns | CRI |
|------------|-------|-------------------|-------|------------|---------|-----|
| GLCNP-40SM | 40W | 100-277Vac/347Vac | 5000K | 120° | 120lm/w | 70+ |
| GLCNP-60SM | 60W | 100-277Vac/347Vac | 5000K | 120° | 120lm/w | 70+ |
| GLCNP-90SM | 90W | 100-277Vac/347Vac | 5000K | 120° | 120lm/w | 70+ |

LED Tri-proof Light (GLVPB)



FEATURES

- Private Model
- AC120-277V/347V optional
- IP65 Wet Location, IK08
- High efficacy, 130lm/w
- Bi-Level Sensor optional



Integrated Design
Diffuse integrated with lighting tray, MAX to 130lm/w



Adjustable Brackets
Easy for installation



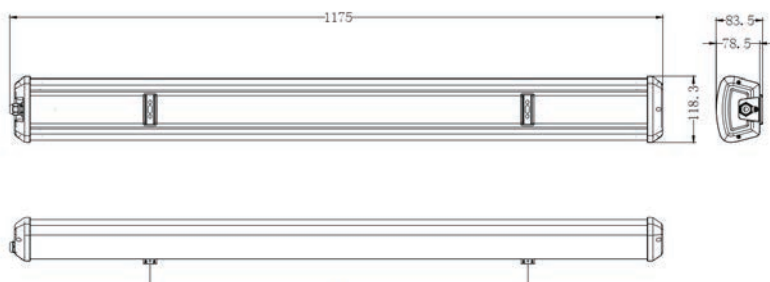
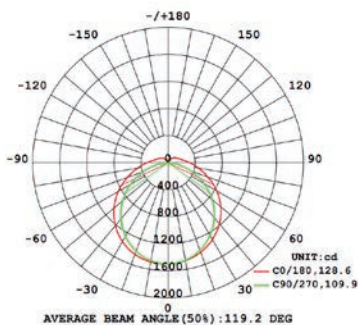
Dimmable+ Sensor
Selectable



Built-in Smart Sensor
Rolsystem

PARAMETER

| MODEL NO. | SIZE | POWER | VOLTAGE | LUMENS | BEAM ANGLE | CRI | Dimmable |
|--------------|------|-------|---------------|---------|------------|-----|---------------|
| GLVP4-36B-XX | 4FT | 40W | 100-277V/347V | 130lm/w | 120° | 80+ | 1-10V, Sensor |
| GLVPC-8F | 8FT | 80W | 100-277V/347V | 130lm/w | 120° | 80+ | 1-10V, Sensor |



LED Vapor Tight Light (GLVP-D 160°)



Dimming



Emergency



Sensor



120mm
[4 3/4]

FEATURES

- IP66 Wet Location
- IK10
- Luminous Efficacy 150lm/w
- Multi-Voltage: 120-347Vac
- 1-10V dim, Sensor, Emergency optional



AVAILABLE OPTIONS



160° Distribution
V0 fire retardant polycarbonate of IK08



Integrated Design
Diffuse integrated with lighting tray, Easy to installation and maintenance



Bracket Design for J-BOX
Accessory mounting kits available for junction box, Quick-mount, surface, stainless steel spring clips supplied.



Adjustable Brackets ①

Stainless Steel Clips with hole design ②

PARAMETER

| MODEL NO. | SIZE | POWER | VOLTAGE | LUMENS | BEAM ANGLE | CRI |
|---------------|---------------|-------|-------------------|-------------|------------|-----|
| GLVPD-4AxxxxD | 1165*120*96mm | 60W | 100-277V/120-347v | 130-150lm/w | 165x120° | 80+ |
| GLVPD-4BxxxxD | 1165*120*96mm | 40W | 100-277V/120-347v | 130-150lm/w | 165x120° | 80+ |

LED Vapor Tight Light (GLVPD)



Dimming



Emergency



Sensor

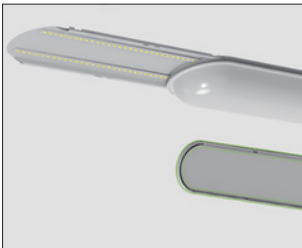


FEATURES

- IP66 Wet Location
- IK10
- Luminous Efficacy 150lm/w
- Multi-Voltage: 120-347Vac
- 1-10V dimmable, Sensor, Emergency optional



ADVANTAGE



Advanced design

- Diffuse integrated with lighting tray
- Save installation steps and time
- Provide protection on LEDs



IP66

-40°C ~ 50°C
working temperature



Mounting Tolerance

+40MM



Connection of power

From Several sides

PARAMETER

| MODEL NO. | SIZE | POWER | VOLTAGE | LUMENS | BEAM ANGLE | CRI |
|-----------|------|-----------------------------|-------------------|-------------|------------|-----|
| GLVPD-4E | 4FT | 20W | 100-277V/120-347v | 130-150lm/w | 120° | 80+ |
| GLVPD-4C | 4FT | 40W | 100-277V/120-347v | 130-150lm/w | 120° | 80+ |
| GLVPD-4B | 4FT | 40W | 100-277V/120-347v | 130-150lm/w | 120° | 80+ |
| GLVPD-4A | 4FT | 60W | 100-277V/120-347v | 130-150lm/w | 120° | 80+ |
| GLVPD-4A | 4FT | 27W/40W/50W (Selectable) | 100-277V/120-347v | 130-150lm/w | 120° | 80+ |

LED Vapor Tight Light (GLVP-A)



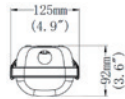
Dimming



Emergency



Sensor



FEATURES

- IP66 Wet Location
- IK10
- Luminous Efficacy 150lm/w
- Multi-Voltage: 120-347Vac
- 1-10V dim, Sensor, Emergency optional



ALL-POLYCARBONATE CONSTRUCTION.

V0 fire retardant polycarbonate ensure high standard of safety and maximum impact rate of IK08.



STAINLESS STEEL
easy to installation

IP66 PROTECTION

waterproof, dustproof and anticorrosive



The mounting brackets keep adjustable space for easy correction.



REVOLUTIONARY DESIGN.

Advanced design of polycarbonate diffuse integrated with lighting tray provide significant protection on LEDs and saving on installation and maintenance.

PARAMETER

| MODEL NO. | SIZE | POWER | VOLTAGE | LUMENS | BEAM ANGLE | CRI |
|-------------|------|-------------------------|-------------------|-------------|------------|-----|
| GLVP-20A | 2FT | 20W | 100-277Vac/347Vac | 130-150lm/w | 120° | 80+ |
| GLVP-40A | 4FT | 36W | 100-277Vac/347Vac | 130-150lm/w | 120° | 80+ |
| GLVP-54A | 4FT | 50W | 100-277Vac/347Vac | 130-150lm/w | 120° | 80+ |
| GLVP-54A | 4FT | 27W/40W/50W(Selectable) | 100-277Vac/347Vac | 130-150lm/w | 120° | 80+ |
| GLVP-80A | 8FT | 80W | 100-277Vac/347Vac | 130-150lm/w | 120° | 80+ |
| GLVP-100A | 8FT | 100W | 100-277Vac/347Vac | 130-150lm/w | 120° | 80+ |
| GLVP-100A-H | 8FT | 80W/100W(Selectable) | 100-277Vac/347Vac | 130-150lm/w | 120° | 80+ |

LED Vapor Tight Light(GLVPE)



Dimming



Emergency



Sensor

FEATURES

- Aluminum lamp body
- IP66 Wet Location
- 140lm/w and 150lm/w optional
- Multi-Voltage: 120-347Vac optional
- Easy wiring and linkable
- 0-10V dimming optional
- Bi-level Sensor, Emergency optional



ADVANTAGE



Quickly open endcap and tool Free, Easy wiring



Easy Linkable and tool-Free

PARAMETER

| MODEL NO. | SIZE | POWER | VOLTAGE | BEAM ANGLE | LUMENS | CRI |
|------------|------|-------|-------------------|------------|---------|-----|
| GLVPE-440 | 4FT | 40W | 100-277V/120-347V | 120° | 140LM/W | 80+ |
| GLVPE-460 | 4FT | 60W | 100-277V/120-347V | 120° | 140LM/W | 80+ |
| GLVPE-580 | 5FT | 80W | 100-277V/120-347V | 120° | 140LM/W | 80+ |
| GLVPE-890 | 8FT | 90W | 100-277V/120-347V | 120° | 140LM/W | 80+ |
| GLVPE-8120 | 8FT | 120W | 100-277V/120-347V | 120° | 140LM/W | 80+ |

LED Linear Strip(GLLSA)



Dimming



Emergency



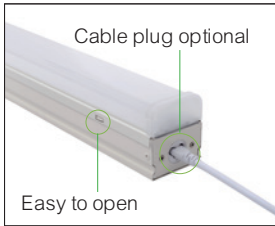
Sensor

FEATURES

- IP20 indoor
- 140lm/w standard, 200lm/w optional
- Multi-Voltage: 120-347Vac optional
- Easy wiring and Easy Linkable
- 0-10V dimmable optional
- Bi-level Sensor, Emergency optional

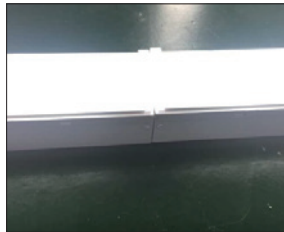


ADVANTAGE



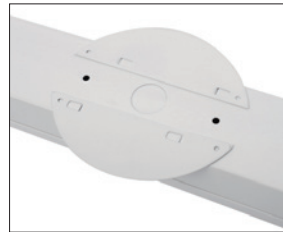
Easy to open

Connector for cable



Clear End Cap for nice Lighting effect

INSTALLATION



Surface mount with half-round kits

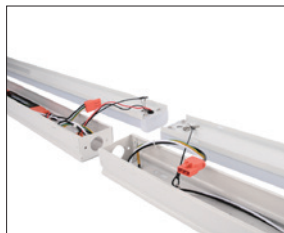


Hanging with V hook and rope

INTERNAL LINKABLE



Connector for cable



Connector for wiring

EXTERNAL LINKABLE



Linkable cord



smaller connector for seamless connection

PARAMETER

| MODEL NO. | SIZE | POWER | VOLTAGE | BEAM ANGLE | LUMENS | CRI |
|---------------|------|-------|-------------------|------------|---------|-----|
| GLLSA-4F-38W | 4FT | 38W | 100-277V/120-347V | 120° | 140LM/W | 80+ |
| GLLSA-8F-60W | 8FT | 60W | 100-277V/120-347V | 120° | 140LM/W | 80+ |
| GLLSA-8F-80W | 8FT | 80W | 100-277V/120-347V | 120° | 140LM/W | 80+ |
| GLLSA-8F-120W | 8FT | 120W | 100-277V/120-347V | 120° | 140LM/W | 80+ |

Wrap Around Fixture GLLA-20061



SPECIFICATION

Model Number

GLLA-20061XX-001

Features:

- Can be linkable fast, easy for installation.
- Reasonable size design, reducing transportation cost.
- Unique pressure assembly cover structure, convenient for customer to disassembly and assembly.

Basic parameter

| Item Number | LED Type | IP Grade | Product Size(inch/) | Material | N.W. |
|-----------------|---------------|----------|---|-----------|------|
| GLL-20061XX-001 | SMD2835/72PCS | IP40 | L24.5*W5.3*H0.16 inch (L622*W135*H45 mm) | ALPMMA+PC | 0.82 |
| GLL-40121XX-001 | SMD2835/96PCS | IP40 | L47.4* W5.3*H0.16 inch (L1204*W135*H45 mm) | ALPMMA+PC | 1.35 |

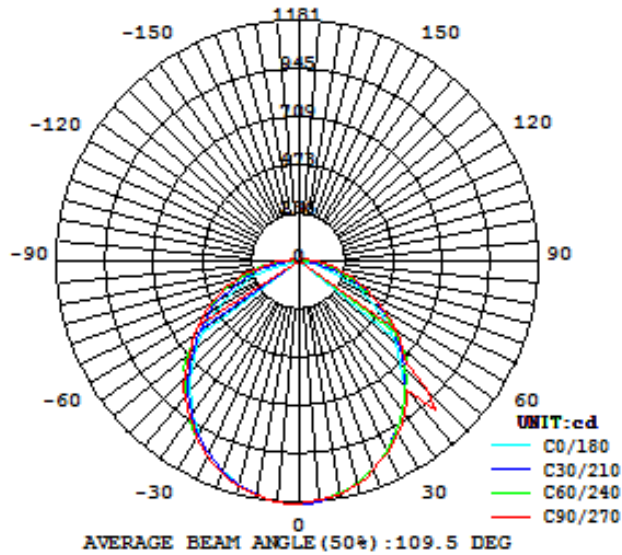
Electrical parameter

| Model | Power | Input voltage | Efficiency(%) | Power Factor | Certificate |
|-----------------|-------|----------------|---------------|--------------|-------------|
| GLL-20061XX-001 | 20W | 120VAC 50-60Hz | > 90% | > 0.95 | DLC ETL |
| GLL-40121XX-001 | 40W | 120VAC 50-60Hz | > 90% | > 0.95 | DLC ETL |

Optical parameter

| Model | CCT(K) | Luminous Efficiency | Beam angle | Rendering Index |
|-----------------|------------|---------------------|------------|-----------------|
| GLL-20061XX-001 | 3000-5000K | 100 LM/W | >120 | > 80 |
| GLL-40121XX-001 | 3000-5000K | 100 LM/W | >120 | > 80 |

Photometric



Storage Conditions

| | |
|-----------------------|--------------------------------|
| Storage temperature | -40°C~+80°C |
| Operating temperature | -30°C~+45°C (the best in 25°C) |
| Environment humidity | 40-90%RH |

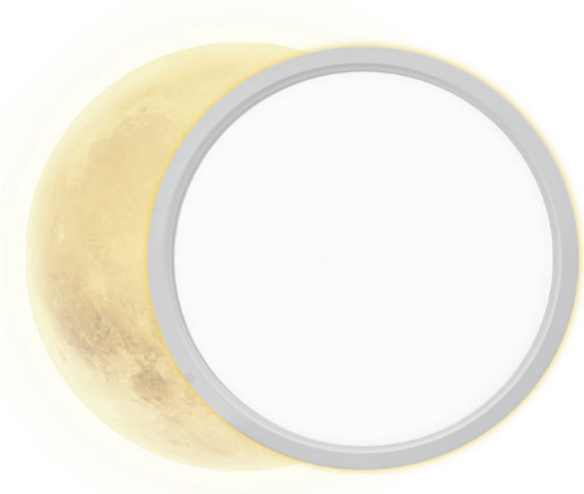
Life and Warranty

| | |
|------------------|--|
| Life Span | 50,000H(Luminance decrease is less than 30%) |
| Quality Warranty | 5 years |

Instruction

1. Please read the product specifications carefully first and confirm that the environment is in accordance with the specifications on the specifications before you can install and use them.
2. Before the product is connected to the power supply, make sure the switch is in a disconnected state.
3. Lamps shall be installed by qualified electricians and the wiring shall comply with IEC electrical standards or national standards;
4. This product is suitable for indoor use;
5. Do not use too long or too low voltage in the state of long-term use will affect the normal use of function and life;
6. Shall not be installed in flammable objects and the lamps can't be covered by heat insulation materials or similar materials!
7. When installing, changing and cleaning the lamp, the power supply must be cut off to ensure personal safety;
8. When the lamp is found to work abnormally (self extinguishing or flashing), please check the contact performance of the connecting plug and whether the supply voltage is normal. Often, the failure has not been ruled out, new lights need to be replaced;
9. When the lamp surface needs cleaning, please disconnect the power supply first! Wipe with a soft cloth sticky soapy water wring dry, and then use dry cloth to clean, please don't wait to wipe the surface of the light volatile substance use banana water, please do not spray any chemicals on the lamp, the lamp may otherwise discoloration or damage.
10. Please do not disassemble the product avoid to damage the internal parts. Self removal cannot enjoy warranty service.

Luna Series Smart Flush Mount Ceiling Light (GLCP)



Simple LOOK Good LOOK
Height only 24mm(0.94inch)

SINGLE COLOR TYPE

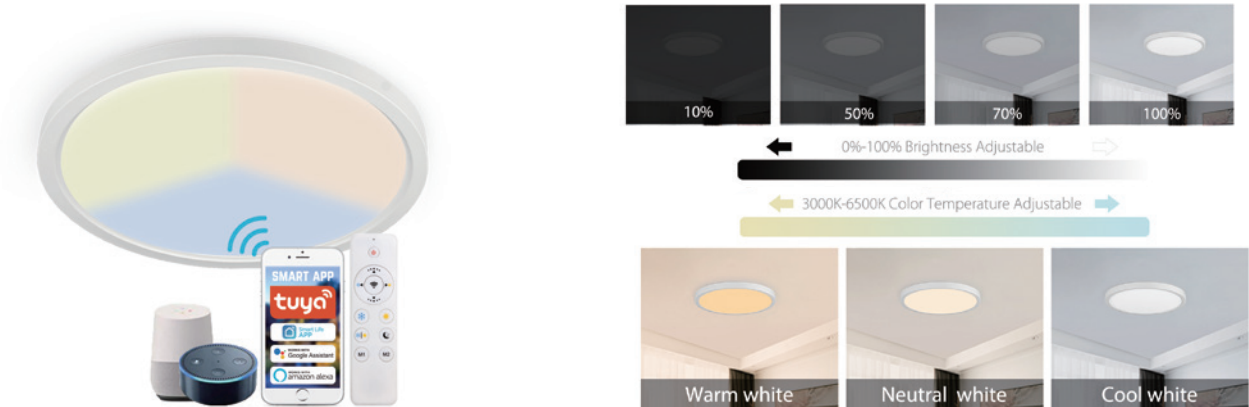


3 COLOR SWITCHABLE TYPE

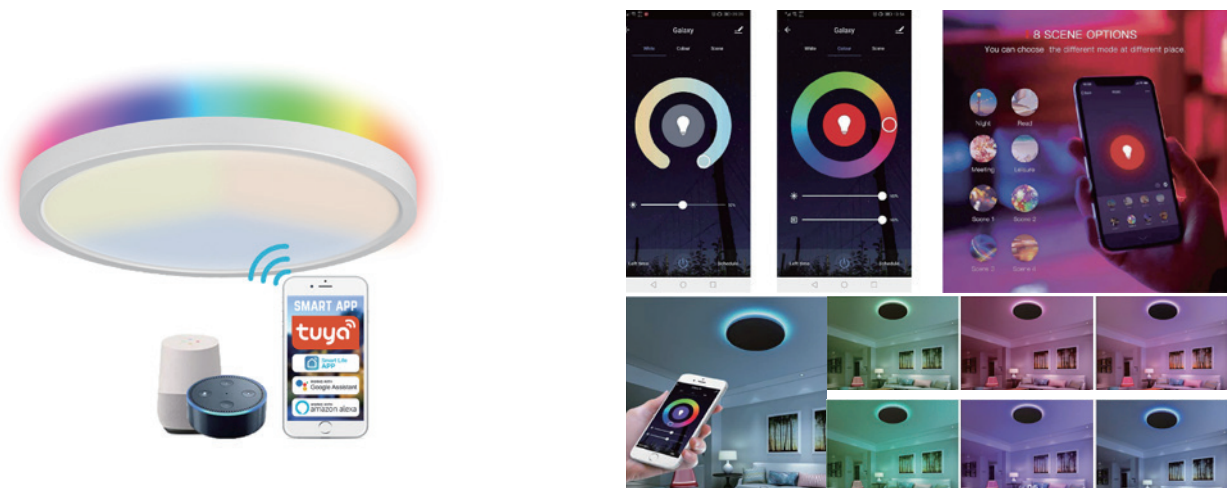


Luna Series Smart Flush Mount Ceiling Light (GLCP)

Color 3000K-6500K Dimmable Smart Type



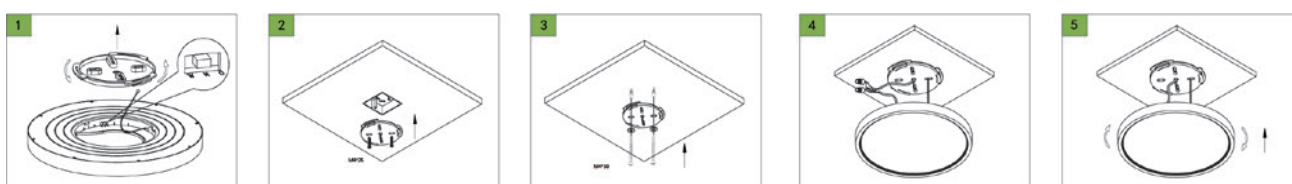
Front Light 3000K-6500K White +Back Light RGB Smart Type



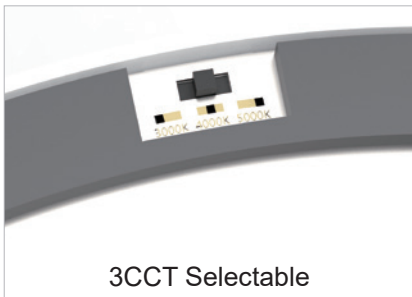
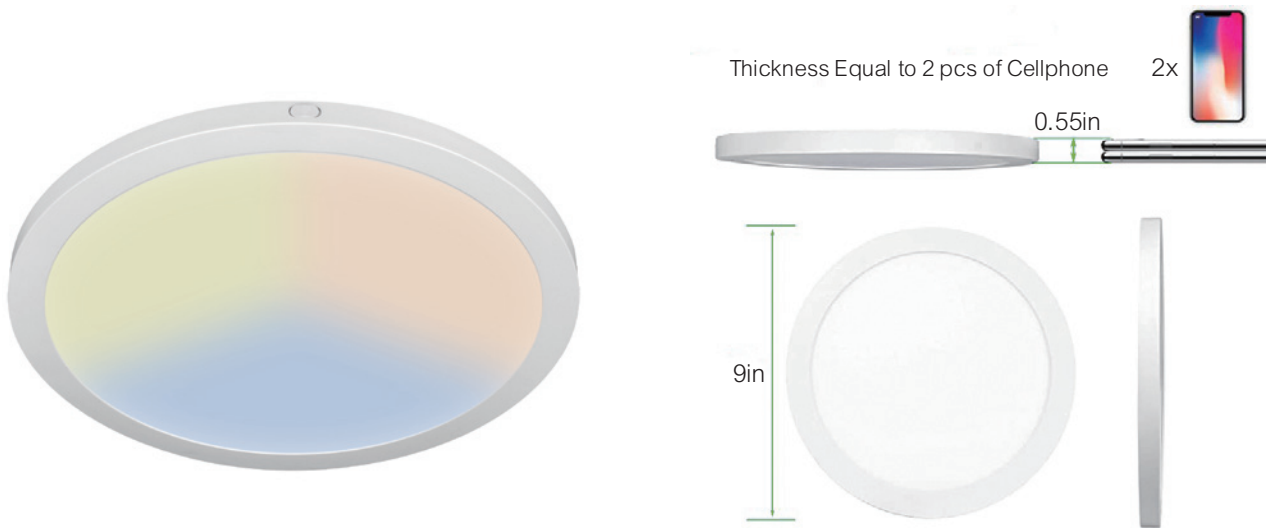
PARAMETER

| MODEL NO. | Dimension | POWER | VOLTAGE | ANGLE | LEMENS | CRI | Function |
|-------------|-----------|-------|---------|-------|--------|-----|----------|
| GLCP225-18W | 9"x0.94" | 18W | 120V | 120° | 1440lm | 80+ | Dimmable |
| GLCP300-24W | 12"x0.94" | 24W | 120V | 120° | 2040lm | 80+ | Dimmable |
| GLCP400-36W | 16"x0.94" | 36W | 120V | 120° | 3240lm | 80+ | Dimmable |

EASY INSSLATION



Ultra Slim Flush Mount Ceiling Light (GLFMA)



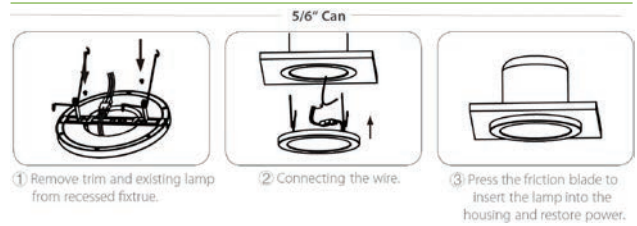
PARAMETER

| MODEL NO. | Dimension | POWER | VOLTAGE | ANGLE | LEMENS | CRI | Function |
|-----------|-------------|-------|---------|-------|--------|-----|----------|
| GLFM-12A | 7" x 0.55" | 12W | 120V | 120° | 900lm | 80+ | Dimmable |
| GLFM-18A | 9" x 0.55" | 18W | 120V | 120° | 1440lm | 80+ | Dimmable |
| GLFM-24A | 12" x 0.55" | 24W | 120V | 120° | 2040lm | 80+ | Dimmable |

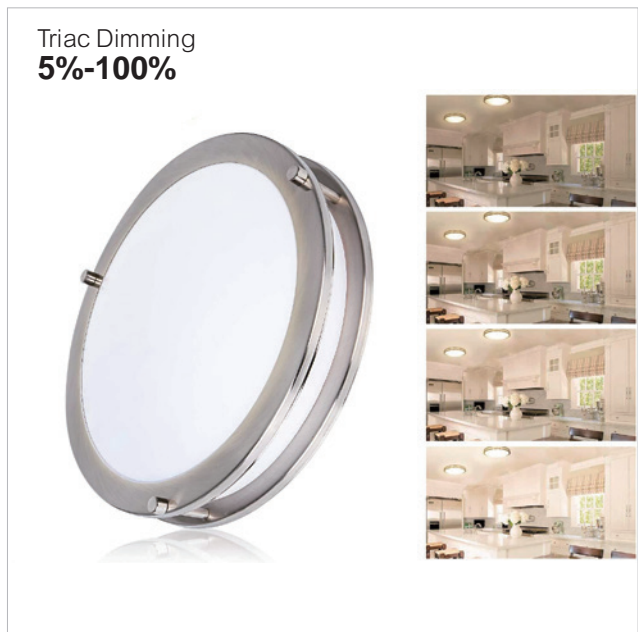
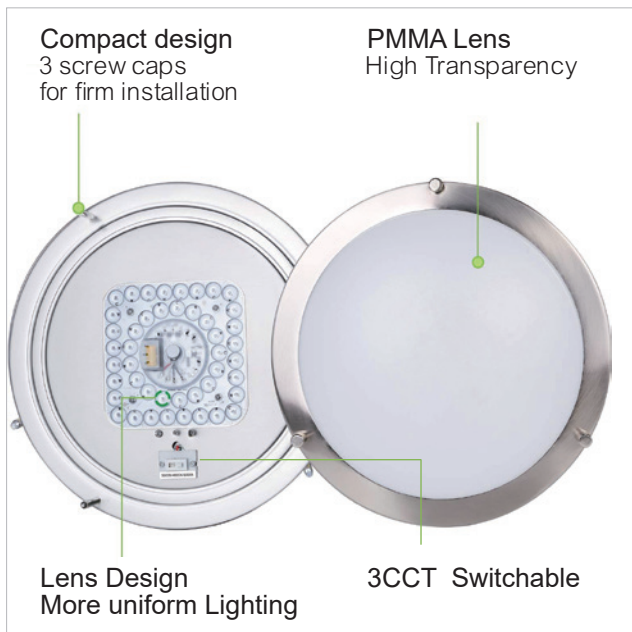
JUNCTION BOX MOUNT INSTALLATION



RECESSED CAN INSTALLATION



Double Ring Flush Mount Ceiling Light (GLFMB)



PARAMETER

| MODEL NO. | Dimension | POWER | VOLTAGE | ANGLE | LEMENS | CRI | Function |
|-----------|-----------|-------|---------|-------|--------|-----|----------|
| GLFMB-10 | 10"x3.27" | 12W | 120V | 120° | 1200lm | 80+ | Dimmable |
| GLFMB-12 | 12"x3.27" | 18W | 120V | 120° | 1600lm | 80+ | Dimmable |
| GLFMB-14 | 14"x3.27" | 24W | 120V | 120° | 1920lm | 80+ | Dimmable |

Surface Mounted Integrated Square Flat Panel (GLMPS)



1x1FT



1x2FT

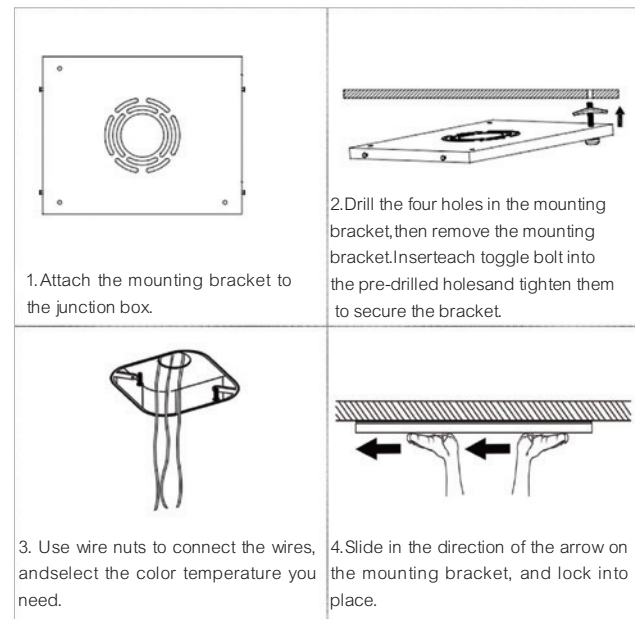


1x4FT

ADVANTAGE



INSTRUCTIONS: Recessed Mounting



PARAMETER

| MODEL NO. | SIZE | Dimension | POWER | VOLTAGE | ANGLE | LEMENS | CRI | Function |
|------------|----------|--------------------|-------|---------|-------|--------|-----|----------|
| GLMPS-1010 | 1x1 FT | 11.97*11.97*H0.9in | 12W | 120V | 120° | 1200lm | 80+ | Dimmable |
| GLMPS-1020 | 1x2 FT | 11.97*23.94*H0.9in | 24W | 120V | 120° | 1440lm | 80+ | Dimmable |
| GLMPS-1040 | 1x4 FT | 11.97*47.87*H0.9in | 48W | 120V | 120° | 1440lm | 80+ | Dimmable |
| GLMPS-0520 | 0.5x2 FT | 5.98*23.94*H0.9in | 12W | 120V | 120° | 1440lm | 80+ | Dimmable |
| GLMPS-0540 | 0.5x4 FT | 5.98*47.87*H0.9in | 24W | 120V | 120° | 1440lm | 80+ | Dimmable |

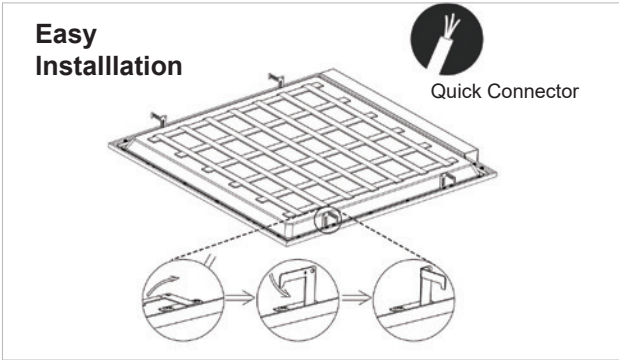
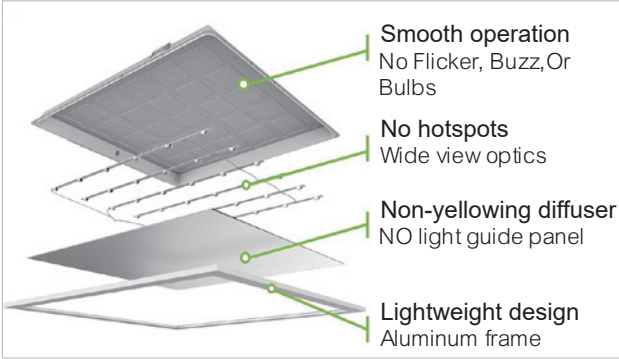
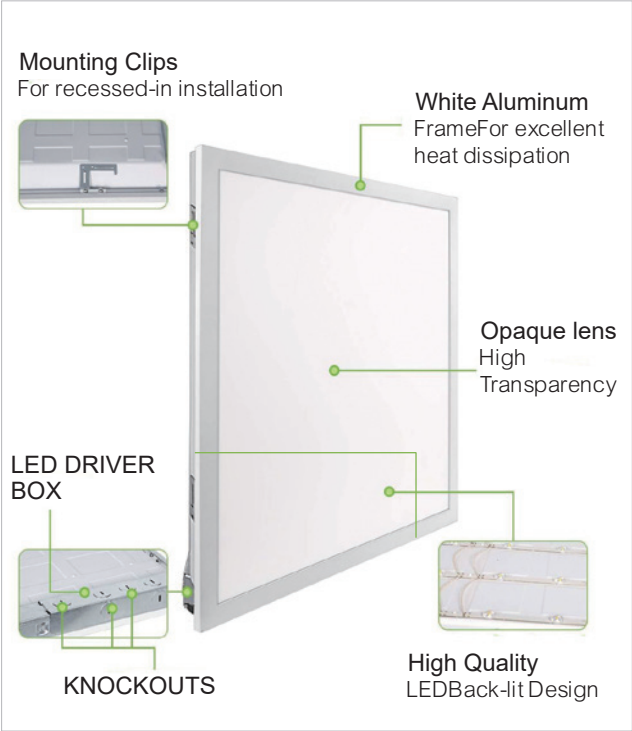
Back-Lit LED Flat Panel Light (GLBLIT)



0-10V Dimming



ADVANTAGE



PARAMETER

| MODEL NO. | SIZE | POWER | VOLTAGE | ANGLE | LEMENS | CRI | Function |
|--------------------|--------|-------|----------|-------|---------|-----|----------|
| GLBLIT-2X2-40DR-A1 | 2x2FT | 40W | 100-277V | 120° | 110lm/w | 80+ | Dimmable |
| GLBLIT-2X4-50D-A1 | 2X4 FT | 50W | 100-277V | 120° | 110lm/w | 80+ | Dimmable |
| GLBLIT-2X2-30DR-P1 | 2X2FT | 30W | 100-277V | 120° | 130lm/w | 80+ | Dimmable |
| GLBLIT-2X4-40DR-P1 | 2X4 FT | 40W | 100-277V | 120° | 130lm/w | 80+ | Dimmable |

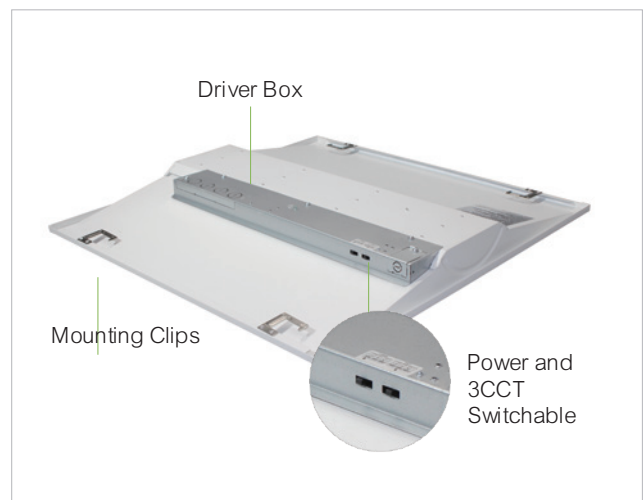
Back-Lit LED Flat Panel Light (GLTRS)



0-10V Dimming



ADVANTAGE



Motion Sensor



2.4G Controller



Emergency Pack(4W & 8W)



Bluetooth Control

PARAMETER

| MODEL NO. | SIZE | POWER | VOLTAGE | ANGLE | LEMENS | CRI | Function |
|---------------|--------|------------|----------|-------|---------|-----|-----------|
| GL3TRS2230DUV | 2x2FT | 20 W/30W | 120-347V | 120° | 130lm/w | 80+ | 0-10V Dim |
| GL3TRS2236DHV | 2x2FT | 24W30W/36W | 120-347V | 120° | 130lm/w | 80+ | 0-10V Dim |
| GL3TRS1436DHV | 1x4FT | 36W | 120-347V | 120° | 130lm/w | 80+ | 0-10V Dim |
| GL3TRS2445DHV | 2X4 FT | 24W36W/45W | 120-347V | 120° | 130lm/w | 80+ | 0-10V Dim |

LED Recessed Can Retrofit Downlight (GLDLA)



4 INCH SIZE



Overall Diameter
4.96 inch



Overall Height
1.81 inch

5/6 INCH SIZE



Overall Diameter
7.40 inch



Overall Height
2.36 inch



PARAMETER

| MODEL NO. | SIZE | POWER | VOLTAGE | ANGLE | LEMENS | CRI | Function |
|-------------|-------|-------|---------|-------|--------|-----|----------|
| GLDLA-04-11 | 4" | 11W | 120V | 100° | 850lm | 90+ | Dimmable |
| GLDLA-06-15 | 5"/6" | 15W | 120V | 100° | 1200lm | 90+ | Dimmable |

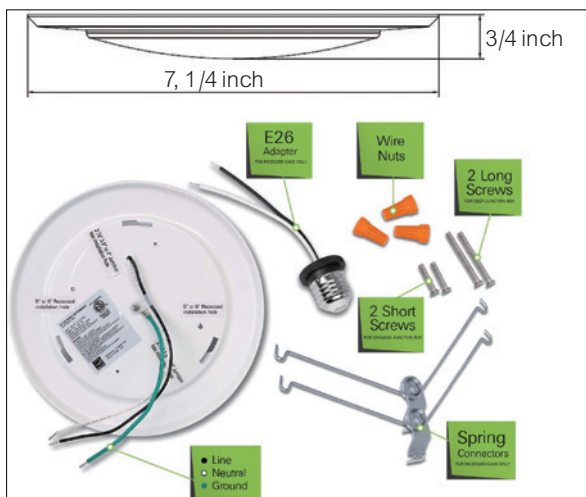
Integrated LED DISC Downlight (GLDKA)



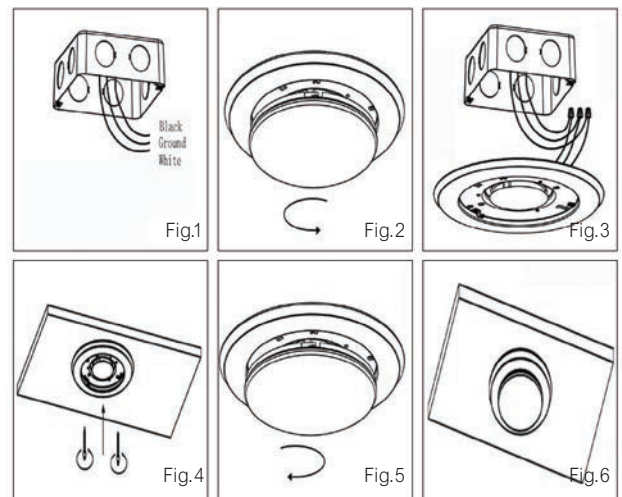
Compatible With 5/6 Inch Recessed Can



DIMENSION



COMPATIBLE WITH 2.75/3.5/4 INCH JUNCTION BOX



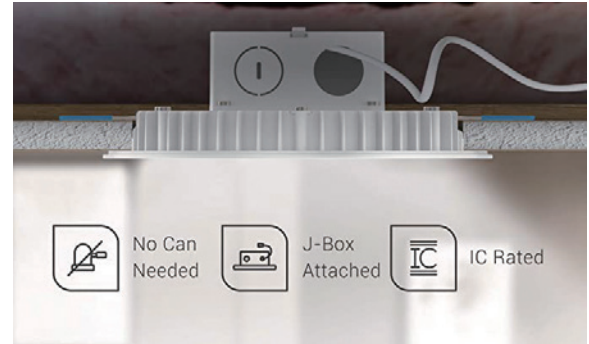
PARAMETER

| MODEL NO. | SIZE | POWER | VOLTAGE | ANGLE | LEMENS | CRI | Function |
|-------------|---------|-------|---------|-------|--------|-----|----------|
| GLDKA-06-15 | 5" / 6" | 15W | 120V | 120° | 1050lm | 90+ | Dimmable |

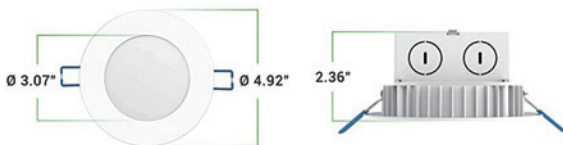
Integrated LED Canless Down light (GLDLF)



EASY INSTALLATION



4 INCH SIZE



5/6 INCH SIZE



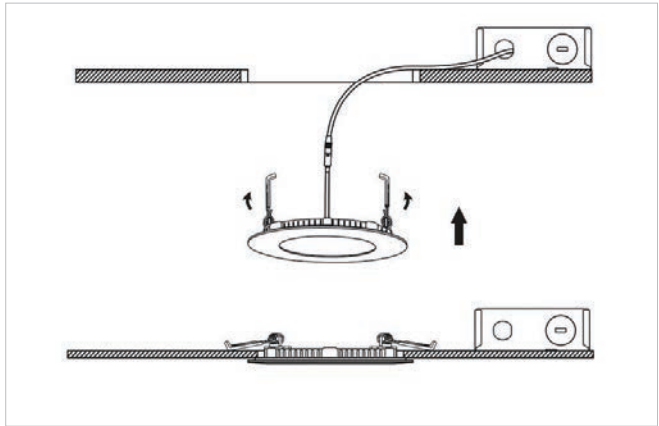
PARAMETER

| MODEL NO. | SIZE | POWER | VOLTAGE | ANGLE | LEMENS | CRI | Function |
|-------------|-------|-------|---------|-------|--------|-----|----------|
| GLDLA-04-11 | 4" | 11W | 120V | 100° | 850lm | 90+ | Dimmable |
| GLDLA-06-15 | 5"/6" | 15W | 120V | 100° | 1200lm | 90+ | Dimmable |

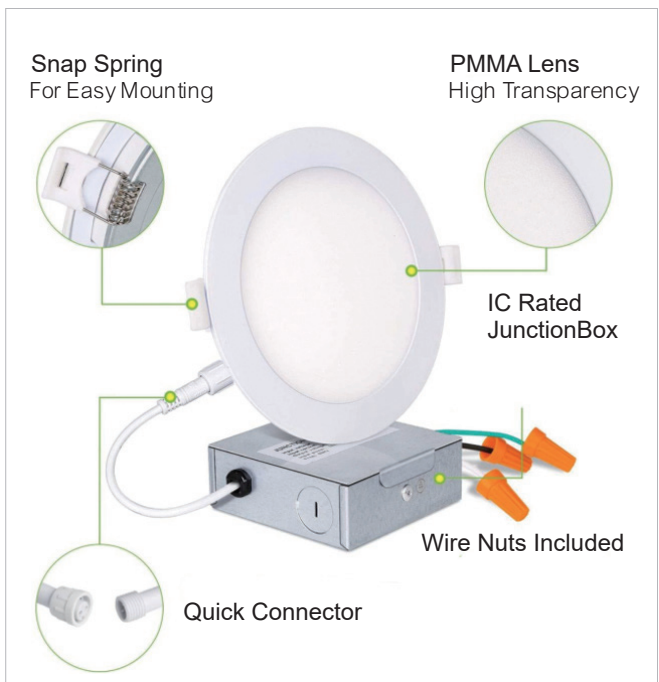
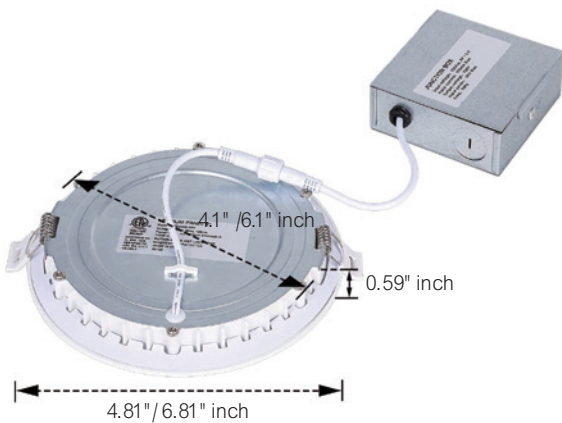
Ultra-thin LED Canless Down light (GLDLD)



EASY INSTALLATION



DIMENSION



PARAMETER

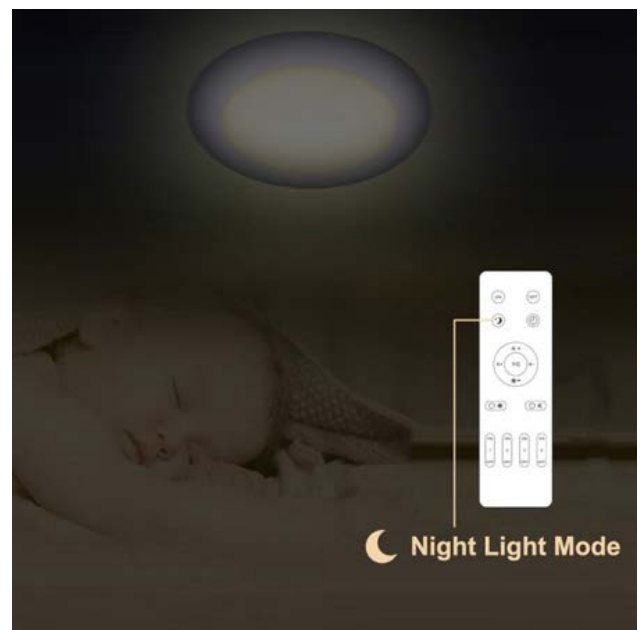
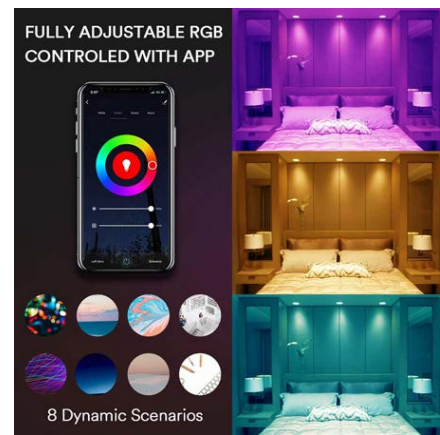
| MODEL NO. | SIZE | POWER | VOLTAGE | ANGLE | LEMENS | CRI | Function |
|-------------|------|-------|---------|-------|--------|-----|----------|
| GLDLD-04-11 | 4" | 11W | 120V | 120° | 850lm | 90+ | Dimmable |
| GLDLD-06-15 | 6" | 15W | 120v | 120° | 1200lm | 90+ | Dimmable |

WIFI and Remote RGB Down light GLG008B

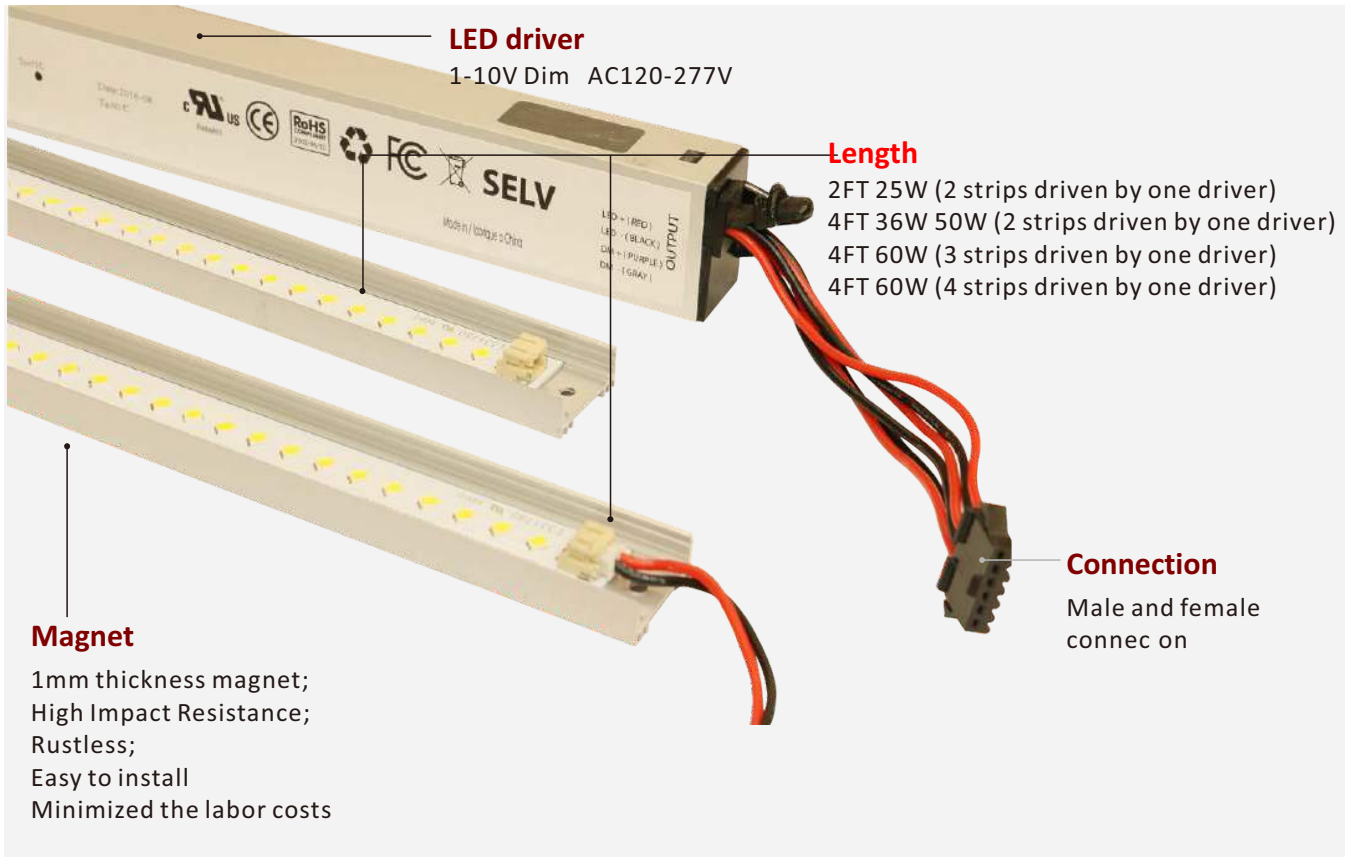


4" 9W and 6" 12W WIFI and Remote Recessed Panel

1. Model No.: GLG008B-R-5L-WIFI
2. Watt: 9W AC120V 50/60Hz.
3. Lumen: 700-1000LM
4. Color Available: RGBW
5. Triac dimmable.
6. Airtight; Suitable for Damp Locations
7. With Junction box, compatible for North America's installation regulation requirement.
8. ETL Energy Star approved, 5 years warranty.



MAGNETIC STRIP LIGHTS FOR RETROFITING FLORESCENT LIGHTS



Parameters

| Model # | Size | Power | Efficacy | Lumen | Driver | Multiple Driving Type | Wire Input | CCT |
|--------------------|------|-------|----------|--------|----------|-------------------------------|------------|----------------|
| GLSY-T8RTP25W2FT*2 | 2FT | 25W | 130LM/W | 3250LM | External | 2 strips driven by one driver | One end | 4000K 5000K |
| GLSY-T8RTP36W4FT*2 | 4FT | 36W | | 4680LM | | 2 strips driven by one driver | | |
| GLSY-T8RTP50W4FT*2 | | 50W | | 6500LM | | 2 strips driven by one driver | | |
| GLSY-T8RTP60W4FT*3 | | 60W | | 7800LM | | 3 strips driven by one driver | | |
| GLSY-T8RTP60W4FT*4 | | 60W | | 7800LM | | 4 strips driven by one driver | | |

Ordering Guide

For example: GLXSY-T8RTPXXWXFT*Y ZZZZ

| Brand | Product name | Power | Length | Strip Qty | CCT |
|------------|--------------|-------------|------------|------------|-------------|
| GLS | T8RT | PXXW | XFT | Y | ZZZZ |
| Y | | | | | |
| GLXS | T8RT | 25W | 2F | 2=2 strips | 4000K |
| Y | | 36W | 4F | 3=3 strips | 5000K |
| | | 50W | T | 4=4 strips | |
| | | 60W | | | |

Integrated T5 tube series GLPLI-T1

Features, Benefits, Performance

- High brightness EPISTAR 2835 LED chip
- High CRI>80Ra; CRI>90Ra available
- Can be easily installed
- 50% reduction in energy consumption
- 50,000hrs lifespan, 5 years warranty
- Vibration and impact resistant
- No mercury allowing for non-hazardous waste materials
- Instant illumination, no flicker, no buzz
- No UV emission



Parameters

| Model | Watts | Length | Lumen | Voltage | CCT | CRI | PF | etac itreC |
|-------------------|-------|-----------|-------------|---------------|----------------|----------------|----|---------------|
| GLPL-TI-9WAN-YYK | 9W | 2FT/568mm | 950-1150lm | 100- 277VA | 3000- 6500K | >80Ra >0.95 | | ETL cETL DLC |
| GLPL-TI-15WAN-YYK | 15W | 3FT/867mm | 1650-1750lm | | | | | ETL cETL DLC |
| GLPLTI-18WAN-YYK | 18W | 4FT/1142m | 1850-2050lm | | | | | ETL cETL DLC |
| GLPLTI20WAN-YYK- | 20W | | 2100-2250lm | | | | | ETL cETL DLC |
| GLPL-TI-22WAN-YYK | 22W | | 2350-2550lm | | | | | ETL cETL DLC |
| GLPL-TI-5WAN-YYK | 5W | 1FT/300mm | 550-600lm | | | | | ETL cETL DLC |

We also have:

- 1) Decorative and Designer Office Lights
- 2) Smart Controls (Bluetooth and WIFI)
- 3) Commercial Grow Lights
- 4) Explosion Proof Lights
- 5) Poultry Lights
- 6) Barn Lights
- 7) Solar Lights
- 8) Tube Lights
- 9) Hotel lights
- 10) Washer Lights
- 11) Landscaping Lights for larger jobs
- 12) Decorative Lights for Spec Homes and Commercial Buildings
- 13) Commercial Grade Strip Lighting for larger jobs



For any reason, you do not see what you are looking for, we represent over 100 manufactures globally. Plus we have OEM services to get you the right light for your purpose.

Call today for more information 866 628 4278, info@cwll.ca



global lighting and electrical design

CANADIAN WHOLESALE LIGHTING



5-1525 DILWORTH DR KELOWNA BC V1Y9N5



866 628 4278, 778 484 CWLL



(2955) info@cwll.ca



www.cwll.ca



<http://candianwholesalelighting.com>

WHO DO WE SELL TO



Using precious resources sustainably and responsibly!

Call for a

- Free Estimate
- Free Energy Audit Analysis
- Free Engineered Dialux Drawing of your project
- Free Lighting Design and System Management
- Free Consultation